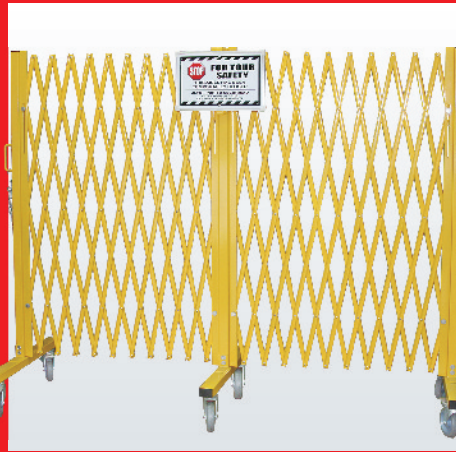


**2015-2016**

**STORAGE AND SAFETY EQUIPMENT**  
**For Your Warehouse / Supermarket / Plant / Office**



# BOLTLESS SHELVING

Super strong roll formed 14 Ga steel upright allows shelves to be adjusted at 1½" increments. All model have single, double or extra double rivet beams for choice, finish in powder coated.



### Angle Post

Model	Thickness	H'
BN610001	14Ga	2.5
BN610002	14Ga	3
BN610003	14Ga	4
BN610004	14Ga	5
BN610005	14Ga	6
BN610006	14Ga	7
BN610007	14Ga	8
BN610008	14Ga	9
BN610009	14Ga	10
BN610010	14Ga	12
BN610011	14Ga	13



### Heavy Duty Rivet Beams (300lbs per Shelf)

Model	Thickness	L"
BN610033	14Ga	12
BN610034	14Ga	15
BN610035	14Ga	18
BN610036	14Ga	24
BN610037	14Ga	36
BN610038	14Ga	42
BN610039	14Ga	48



### Extra Heavy Duty Double Rivet Beams (600-1000lbs per Shelf)

Model	Thickness	L"
BN610040	16Ga	12
BN610041	16Ga	15
BN610042	16Ga	18
BN610043	16Ga	24
BN610044	16Ga	30
BN610045	14Ga	36
BN610046	14Ga	42
BN610047	14Ga	48
BN610048	14Ga	60
BN610049	14Ga	69
BN610050	14Ga	72
BN610051	14Ga	96



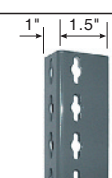
### Heavy Duty Angle Post

Model	Thickness	H'
BN610012	14Ga	7
BN610013	14Ga	8
BN610014	14Ga	10
BN610015	14Ga	12
BN610016	14Ga	14
BN610017	14Ga	18



### Flower Post

Model	Thickness	H'
BN610018	14Ga	6
BN610019	14Ga	6.5
BN610020	14Ga	7
BN610021	14Ga	8
BN610022	14Ga	10
BN610023	14Ga	12



### Extra Heavy Duty Double Rivet Channel Beam (1000-1500lbs per Shelf)

Model	Thickness	L"
BN610052	14Ga	48
BN610053	14Ga	72
BN610054	14Ga	96
BN610055	11Ga	72
BN610056	11Ga	96



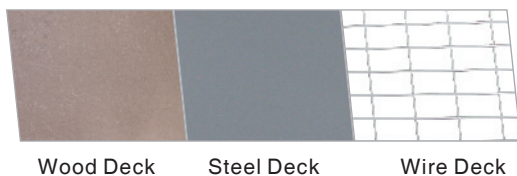
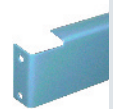
### Tee Post

Model	Thickness	H'
BN610024	14Ga	3
BN610025	14Ga	4
BN610026	14Ga	5
BN610027	14Ga	6
BN610028	14Ga	7
BN610029	14Ga	8
BN610030	14Ga	9
BN610031	14Ga	10
BN610032	14Ga	12



### Shelf Deck Support

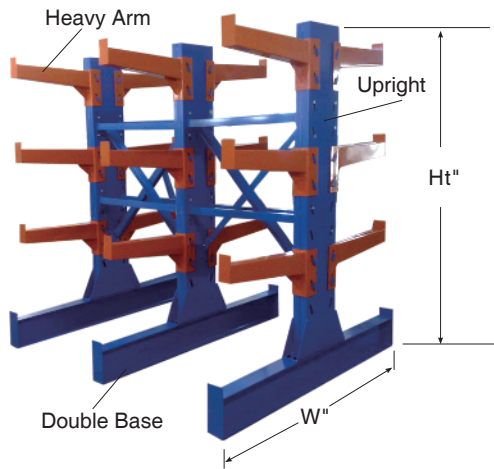
Model	Thickness	L"
BN610057	16Ga	12
BN610058	16Ga	15
BN610059	16Ga	18
BN610060	16Ga	24
BN610061	16Ga	30
BN610062	16Ga	36
BN610063	16Ga	48



W" x D"	Model			L" x D"	Model		
	Wood Deck	Wire Deck	Steel Deck		Wood Deck	Wire Deck	Steel Deck
36 x 12	BN610064	BN610075	BN610086	60 x 24	BN610097	BN610108	BN610119
36 x 18	BN610065	BN610076	BN610087	60 x 36	BN610098	BN610109	BN610120
36 x 24	BN610066	BN610077	BN610088	60 x 48	BN610099	BN610110	BN610121
42 x 15	BN610067	BN610078	BN610089	72 x 15	BN610100	BN610111	BN610122
42 x 30	BN610068	BN610079	BN610090	72 x 24	BN610101	BN610112	BN610123
48 x 12	BN610069	BN610080	BN610091	72 x 30	BN610102	BN610113	BN610124
48 x 18	BN610070	BN610081	BN610092	72 x 36	BN610103	BN610114	BN610125
48 x 24	BN610071	BN610082	BN610093	72 x 48	BN610104	BN610115	BN610126
48 x 36	BN610072	BN610083	BN610094	96 x 24	BN610105	BN610116	BN610127
48 x 48	BN610073	BN610084	BN610095	96 x 36	BN610106	BN610117	BN610128
60 x 18	BN610074	BN610085	BN610096	96 x 48	BN610107	BN610118	BN610129



# CANTILEVER RACK



Easy to store long products by horizontal. Unobstructed arms afford easy accessibility with no uprights on the aisle to restrict storage. Choose straight arms for storing flat items, inclined arms for items that roll, such as pipes. Arms adjust easily on 3" increments. "Pin keeper" kit prevents arms from being dislocated during loading and unloading. Easy assembly, no special tools required. Powder coated finish.

## Upright

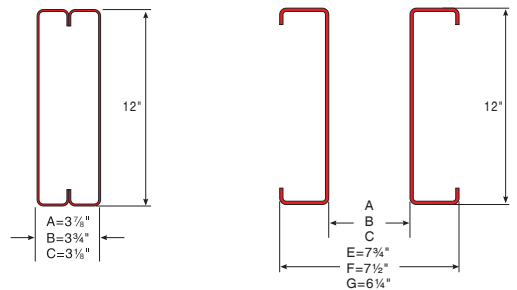
H"	Thickness	Model		
		A" x 12"	B" x 12"	C" x 12"
96	12Ga	BN620001	BN620005	BN620009
120	12Ga	BN620002	BN620006	BN620010
144	12Ga	BN620003	BN620007	BN620011
192	12Ga	BN620004	BN620008	BN620012

## Single Base

W"	Thickness	Model		
		E" x 12"	F" x 12"	G" x 12"
24	12Ga	BN620013	BN620019	BN620025
30	12Ga	BN620014	BN620020	BN620026
36	12Ga	BN620015	BN620021	BN620027
42	12Ga	BN620016	BN620022	BN620028
48	12Ga	BN620017	BN620023	BN620029
60	12Ga	BN620018	BN620024	BN620030

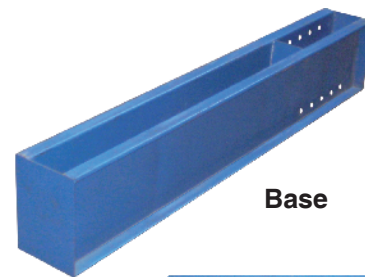
## Double Base

W"	Thickness	Model		
		E" x 12"	F" x 12"	G" x 12"
24	12Ga	BN620031	BN620037	BN620043
30	12Ga	BN620032	BN620038	BN620044
36	12Ga	BN620033	BN620039	BN620045
42	12Ga	BN620034	BN620040	BN620046
48	12Ga	BN620035	BN620041	BN620047
60	12Ga	BN620036	BN620042	BN620048



Section of Upright

Section of Base



Base

## Brace

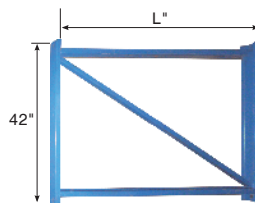
L"	Thickness	Model
36	14Ga	BN620060
48	14Ga	BN620061
60	14Ga	BN620062
72	14Ga	BN620063
96	14Ga	BN620064
144	14Ga	BN620065



## Heavy Duty Arm with Lips

W"	Thickness	Model	Capacity lbs
30	14Ga	BN620049	5000
36	14Ga	BN620050	4100
42	14Ga	BN620051	3600
48	14Ga	BN620052	3300
60	14Ga	BN620053	2800

For inclined arms suffix S



## Brace Kit

L"	Thickness	Model
36	14Ga	BN620054
48	14Ga	BN620055
60	14Ga	BN620056
72	14Ga	BN620057
96	14Ga	BN620058
144	14Ga	BN620059



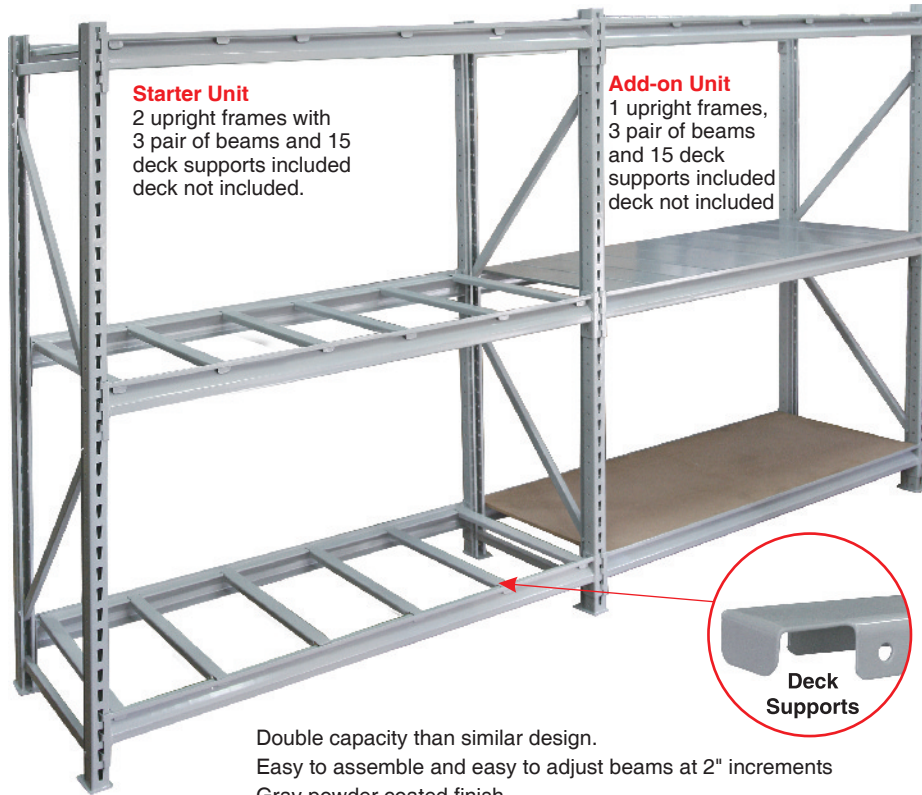
## Light Duty Arm with Lips

W"	Thickness	Model	Capacity lbs
30	14Ga	BN620066	3000
36	14Ga	BN620067	2100
42	14Ga	BN620068	1500
48	14Ga	BN620069	1000

For inclined arms suffix S

# HEAVY DUTY BULK STORAGE RACK

**Max Capacity 3800lbs per shelf**



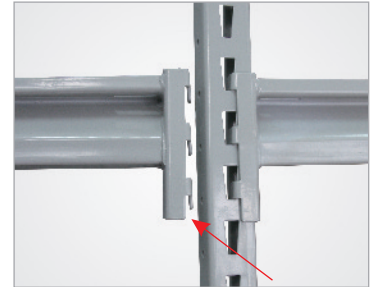
**Starter Unit**  
2 upright frames with 3 pair of beams and 15 deck supports included deck not included.

**Add-on Unit**  
1 upright frames, 3 pair of beams and 15 deck supports included deck not included

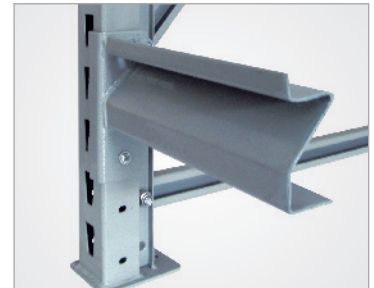


**Deck Supports**

- Double capacity than similar design.
- Easy to assemble and easy to adjust beams at 2" increments
- Gray powder coated finish
- Choose the Deck that suits your needs: No Deck, Wood, Wire or Steel
- Wood Deck** - Low cost, precut 3/4" thick MDF
- Wire Deck** - Visibility and allows light, air and sprinkler penetration  
Galvanized finish or powder coated.
- Steel Deck** - Long lasting, smooth galvanized finish or powder coated.



**Three Hooks for Stronger Connect**



**Z-forming for Greater Load**



**Safety Pin Locks Beams in Place**

Recommended Size W" x D" x H"	Cap. lbs/ Level	No Deck		Wood Desk		Wire Desk		Steel Desk	
		Starter Model	Add-on Model	Starter Model	Add-on Model	Starter Model	Add-on Model	Starter Model	Add-on Model
60 x 18 x 72	3800	BN630001	BN630031	BN630061	BN630091	BN630121	BN630151	BN630181	BN630211
60 x 24 x 72	3800	BN630002	BN630032	BN630062	BN630092	BN630122	BN630152	BN630182	BN630212
60 x 36 x 72	3800	BN630003	BN630033	BN630063	BN630093	BN630123	BN630153	BN630183	BN630213
60 x 48 x 72	3800	BN630004	BN630034	BN630064	BN630094	BN630124	BN630154	BN630184	BN630214
72 x 18 x 72	2750	BN630005	BN630035	BN630065	BN630095	BN630125	BN630155	BN630185	BN630215
72 x 24 x 72	2750	BN630006	BN630036	BN630066	BN630096	BN630126	BN630156	BN630186	BN630216
72 x 36 x 72	2750	BN630007	BN630037	BN630067	BN630097	BN630127	BN630157	BN630187	BN630217
72 x 48 x 72	2750	BN630008	BN630038	BN630068	BN630098	BN630128	BN630158	BN630188	BN630218
96 x 18 x 72	2150	BN630009	BN630039	BN630069	BN630099	BN630129	BN630159	BN630189	BN630219
96 x 24 x 72	2150	BN630010	BN630040	BN630070	BN630100	BN630130	BN630160	BN630190	BN630220
96 x 36 x 72	2150	BN630011	BN630041	BN630071	BN630101	BN630131	BN630161	BN630191	BN630221
96 x 48 x 72	2150	BN630012	BN630042	BN630072	BN630102	BN630132	BN630162	BN630192	BN630222
60 x 24 x 96	3800	BN630013	BN630043	BN630073	BN630103	BN630133	BN630163	BN630193	BN630223
60 x 36 x 96	3800	BN630014	BN630044	BN630074	BN630104	BN630134	BN630164	BN630194	BN630224
60 x 48 x 96	3800	BN630015	BN630045	BN630075	BN630105	BN630135	BN630165	BN630195	BN630225
72 x 24 x 96	2750	BN630016	BN630046	BN630076	BN630106	BN630136	BN630166	BN630196	BN630226
72 x 36 x 96	2750	BN630017	BN630047	BN630077	BN630107	BN630137	BN630167	BN630197	BN630227
72 x 48 x 96	2750	BN630018	BN630048	BN630078	BN630108	BN630138	BN630168	BN630198	BN630228
96 x 24 x 96	2150	BN630019	BN630049	BN630079	BN630109	BN630139	BN630169	BN630199	BN630229
96 x 36 x 96	2150	BN630020	BN630050	BN630080	BN630110	BN630140	BN630170	BN630200	BN630230
96 x 48 x 96	2150	BN630021	BN630051	BN630081	BN630111	BN630141	BN630171	BN630201	BN630231
60 x 24 x 120	3800	BN630022	BN630052	BN630082	BN630112	BN630142	BN630172	BN630202	BN630232
60 x 36 x 120	3800	BN630023	BN630053	BN630083	BN630113	BN630143	BN630173	BN630203	BN630233
60 x 48 x 120	3800	BN630024	BN630054	BN630084	BN630114	BN630144	BN630174	BN630204	BN630234
72 x 24 x 120	2750	BN630025	BN630055	BN630085	BN630115	BN630145	BN630175	BN630205	BN630235
72 x 36 x 120	2750	BN630026	BN630056	BN630086	BN630116	BN630146	BN630176	BN630206	BN630236
72 x 48 x 120	2750	BN630027	BN630057	BN630087	BN630117	BN630147	BN630177	BN630207	BN630237
96 x 24 x 120	2150	BN630028	BN630058	BN630088	BN630118	BN630148	BN630178	BN630208	BN630238
96 x 36 x 120	2150	BN630029	BN630059	BN630089	BN630119	BN630149	BN630179	BN630209	BN630239
96 x 48 x 120	2150	BN630030	BN630060	BN630090	BN630120	BN630150	BN630180	BN630210	BN630240



# HEAVY DUTY BULK STORAGE RACK

*Max Capacity 3800lbs per shelf*



Wood Deck	W" x D"	Model
	60 x 18	BN630501
	60 x 24	BN630502
	60 x 36	BN630503
	60 x 48	BN630504
	72 x 18	BN630505
	72 x 24	BN630506
	72 x 36	BN630507
	72 x 48	BN630508
	96 x 18	BN630509
	96 x 24	BN630510
	96 x 36	BN630511
96 x 48	BN630512	

Wire Deck	W" x D"	Model
	60 x 18	BN630513
	60 x 24	BN630514
	60 x 36	BN630515
	60 x 48	BN630516
	72 x 18	BN630517
	72 x 24	BN630518
	72 x 36	BN630519
	72 x 48	BN630520
	96 x 18	BN630521
	96 x 24	BN630522
	96 x 36	BN630523
96 x 48	BN630524	

Steel Deck	W" x D"	Model
	12 x 24	BN630525
	12 x 36	BN630526
	12 x 48	BN630527
	<b>Packed by 3</b>	

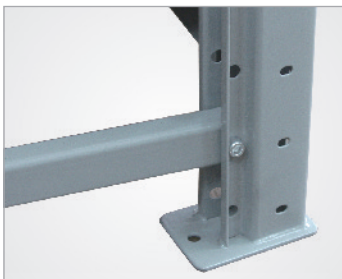


**Beam** - Z formed 12 Ga  
packed by pair (2 pcs)

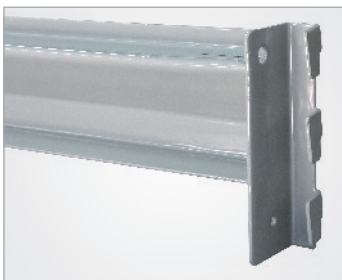
L"	Cap. lbs. per pair	Model
60	3800	BN630538
72	2750	BN630539
96	2150	BN630540

**Deck Support** - For wood and wire decks. Use 5 per level.  
Packed by 2-3 pcs

L"	Model
24	BN630541
36	BN630542
48	BN630543



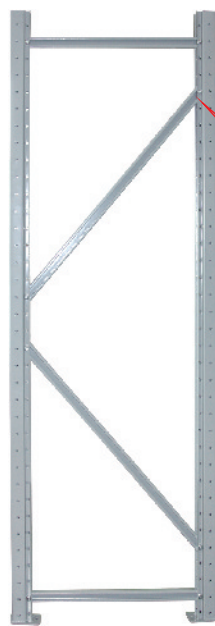
Foot plates allow to anchored to the floor.



Formed step beam creates extra support for increased capacity.



**Upright Frame Unassembled**



**Upright Frame Assembled**



Oval head nut for easy assemble



**BN630544**

5" x 1 1/4" Non-marring Polyurethane wheel  
Can only be added to 18"D x 72"H units for mobility. 1000lb for maximum load

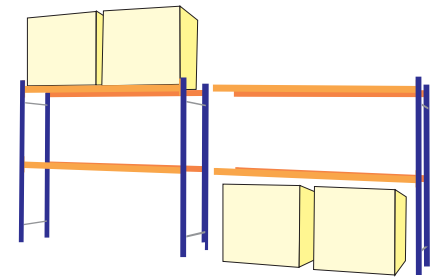
**Upright** - 14 Ga  
Packed by frame

D" x H"	Model
18 x 72	BN630528
24 x 72	BN630529
36 x 72	BN630530
48 x 72	BN630531
24 x 96	BN630532
36 x 96	BN630533
48 x 96	BN630534
24 x 120	BN630535
36 x 120	BN630536
48 x 120	BN630537

# LONG SPAN SHELVING



- Attractive retail merchandising & efficient warehouse storage.
- Unique frame that require no hardware for assembly.



**Starter Unit**  
Two upright frames and two pairs of beams.

**Add-on Unit**  
One upright frame and two pairs of beams.

Size W x D x H(mm)	No Deck		Wood Deck		Wire Deck		Steel Deck	
	Model	Add-on	Model	Add-on	Model	Add-on	Model	Add-on
900 x 450 x 1350	BN7060001	BN7060002	BN7060003	BN7060004	BN7060005	BN7060006	BN7060007	BN7060008
900 x 600 x 1350	BN7060009	BN7060010	BN7060011	BN7060012	BN7060013	BN7060014	BN7060015	BN7060016
1200 x 450 x 1350	BN7060017	BN7060018	BN7060019	BN7060020	BN7060021	BN7060022	BN7060023	BN7060024
1200 x 600 x 1350	BN7060025	BN7060026	BN7060027	BN7060028	BN7060029	BN7060030	BN7060031	BN7060032
1500 x 450 x 1350	BN7060033	BN7060034	BN7060035	BN7060036	BN7060037	BN7060038	BN7060039	BN7060040
1500 x 600 x 1350	BN7060041	BN7060042	BN7060043	BN7060044	BN7060045	BN7060046	BN7060047	BN7060048
1800 x 450 x 1350	BN7060049	BN7060050	BN7060051	BN7060052	BN7060053	BN7060054	BN7060055	BN7060056
1800 x 600 x 1350	BN7060057	BN7060058	BN7060059	BN7060060	BN7060061	BN7060062	BN7060063	BN7060064
900 x 450 x 2100	BN7060065	BN7060066	BN7060067	BN7060068	BN7060069	BN7060070	BN7060071	BN7060072
900 x 600 x 2100	BN7060073	BN7060074	BN7060075	BN7060076	BN7060077	BN7060078	BN7060079	BN7060080
1200 x 450 x 2100	BN7060081	BN7060082	BN7060083	BN7060084	BN7060085	BN7060086	BN7060087	BN7060088
1200 x 600 x 2100	BN7060089	BN7060090	BN7060091	BN7060092	BN7060093	BN7060094	BN7060095	BN7060096
1500 x 450 x 2100	BN7060097	BN7060098	BN7060099	BN7060100	BN7060101	BN7060102	BN7060103	BN7060104
1500 x 600 x 2100	BN7060105	BN7060106	BN7060107	BN7060108	BN7060109	BN7060110	BN7060111	BN7060112
1800 x 450 x 2100	BN7060113	BN7060114	BN7060115	BN7060116	BN7060117	BN7060118	BN7060119	BN7060120
1800 x 600 x 2100	BN7060121	BN7060122	BN7060123	BN7060124	BN7060125	BN7060126	BN7060127	BN7060128
900 x 450 x 2400	BN7060129	BN7060130	BN7060131	BN7060132	BN7060133	BN7060134	BN7060135	BN7060136
900 x 600 x 2400	BN7060137	BN7060138	BN7060139	BN7060140	BN7060141	BN7060142	BN7060143	BN7060144
1200 x 450 x 2400	BN7060145	BN7060146	BN7060147	BN7060148	BN7060149	BN7060150	BN7060151	BN7060152
1200 x 600 x 2400	BN7060153	BN7060154	BN7060155	BN7060156	BN7060157	BN7060158	BN7060159	BN7060160
1500 x 450 x 2400	BN7060161	BN7060162	BN7060163	BN7060164	BN7060165	BN7060166	BN7060167	BN7060168
1500 x 600 x 2400	BN7060169	BN7060170	BN7060171	BN7060172	BN7060173	BN7060174	BN7060175	BN7060176
1800 x 450 x 2400	BN7060177	BN7060178	BN7060179	BN7060180	BN7060181	BN7060182	BN7060183	BN7060184
1800 x 600 x 2400	BN7060185	BN7060186	BN7060187	BN7060188	BN7060189	BN7060190	BN7060191	BN7060192



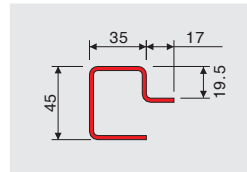
# LONG SPAN SHELVING

Wood Deck	Model	Size W x D(mm)
	BN7061101	900 x 450
	BN7061102	900 x 600
	BN7061103	1200 x 450
	BN7061104	1200 x 600
	BN7061105	1500 x 450
	BN7061106	1500 x 600
	BN7061107	1800 x 450
	BN7061108	1800 x 600

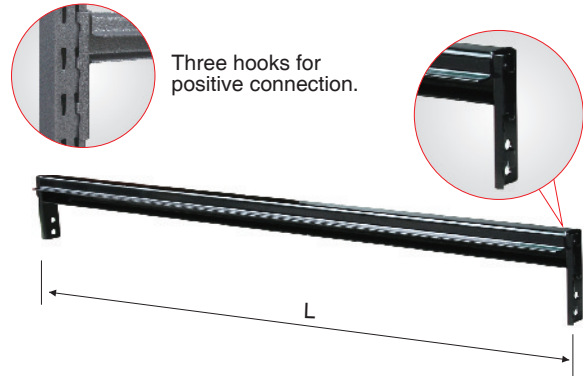
Wire Deck	Model	Size W x D(mm)
	BN7061201	900 x 450
	BN7061202	900 x 600
	BN7061203	1200 x 450
	BN7061204	1200 x 600
	BN7061205	1500 x 450
	BN7061206	1500 x 600

Steel Deck	Model	Size W x D(mm)
	BN7061301	900 x 450
	BN7061302	900 x 600
	BN7061303	1200 x 450
	BN7061304	1200 x 600
	BN7061305	1500 x 450
	BN7061306	1500 x 600

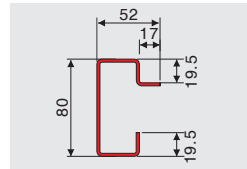
## Light Duty Beam Capacity of 200-500kg



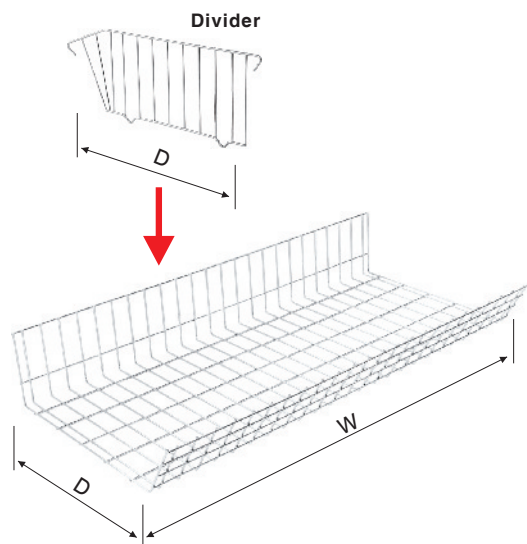
Model	Size L(mm)
BN7061401	1800
BN7061402	1500
BN7061403	1200
BN7061404	900



## Heavy Duty Beam Capacity of 500-1000kg



Model	Size L(mm)
BN7061501	1800
BN7061502	1500
BN7061503	1200
BN7061504	900



## Wire Basket

Model	Size W x D(mm)
BN7061601	1200 x 600
BN7061602	1200 x 450
BN7061603	900 x 600
BN7061604	900 x 450

## Divider

Model	Size D(mm)
BN7061701	600
BN7061702	450



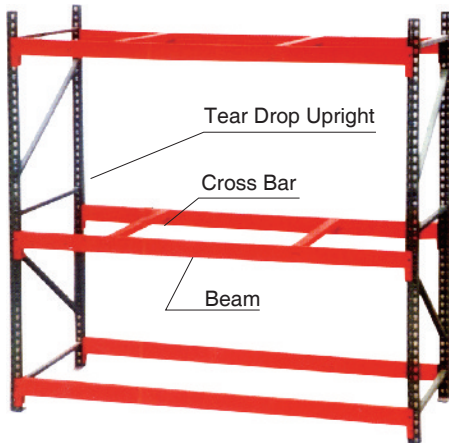
## Full Welded Upright Frame

Model	Size D x H(mm)
BN7061801	600 x 2400
BN7061802	450 x 2400
BN7061803	600 x 2100
BN7061804	450 x 2100
BN7061805	600 x 1350
BN7061806	450 x 1350

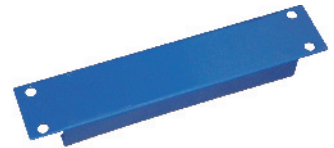
# TEARDROP PALLET RACK



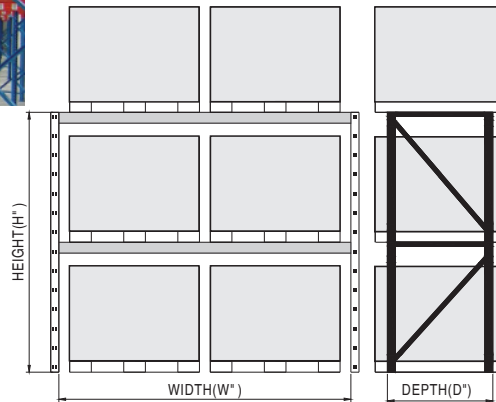
Easy and quick assembly for all your pallet storage needs, tool free, snap-in locking slots ensure a secure and stable unit. Durable heavy 14 gauge steel one piece box-formed reinforced upright frame punched 2" on centers for maximum adjustability and 14 & 16 gauge beams for years of service. Positive six-way locking action: right to left, front to back, up to down. Lock automatically snaps into place and secures beam, is visible for easy checking and fast adjustment. Welded braces provide maximum rigidity and stability. Epoxy finish. Step down beam design accommodates cross bars and decking.



## Row Spacer for Pallet Rack Added Stability



Model	Thickness	L"
BN640061	14Ga	8
BN640062	14Ga	12



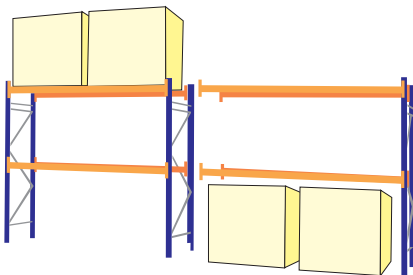
## Teardrop Pallet Rack

W" x D"	Beam H"	Cap. lbs. per pair	Starter	Add-on
			Model	Model
<b>8' HIGH</b>				
48 x 36	3½	6590	BN640001	BN640016
96 x 36	4	5030	BN640002	BN640017
96 x 36	5	7160	BN640003	BN640018
108 x 36	5	6420	BN640004	BN640019
120 x 36	5	5630	BN640005	BN640020
48 x 42	3½	6590	BN640006	BN640021
96 x 42	4	5030	BN640007	BN640022
96 x 42	5	7160	BN640008	BN640023
108 x 42	5	6420	BN640009	BN640024
120 x 42	5	5630	BN640010	BN640025
48 x 48	3½	6590	BN640011	BN640026
96 x 48	4	5030	BN640012	BN640027
96 x 48	5	7160	BN640013	BN640028
108 x 48	5	6420	BN640014	BN640029
120 x 48	5	5630	BN640015	BN640030
<b>10' HIGH</b>				
48 x 42	3½	6590	BN640031	BN640041
96 x 42	4	5030	BN640032	BN640042
96 x 42	5	7160	BN640033	BN640043
108 x 42	5	6420	BN640034	BN640044
120 x 42	5	5630	BN640035	BN640045
48 x 48	3½	6590	BN640036	BN640046
96 x 48	4	5030	BN640037	BN640047
96 x 48	5	7160	BN640038	BN640048
108 x 48	5	6420	BN640039	BN640049
120 x 48	5	5630	BN640040	BN640050
<b>12' HIGH</b>				
48 x 42	3½	6590	BN640051	BN640056
96 x 42	4	5030	BN640052	BN640057
96 x 42	5	7160	BN640053	BN640058
108 x 42	5	6420	BN640054	BN640059
120 x 42	5	5630	BN640055	BN640060

## Frame Guard

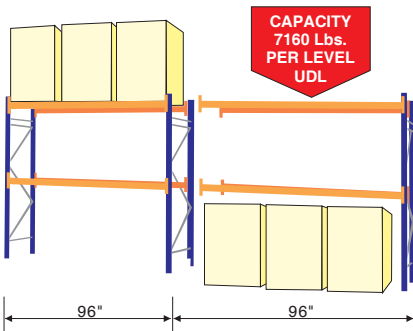


Model	Thickness	H"
BN640063	12Ga	12
BN640064	12Ga	24



**Starter Unit**  
Two upright frames and two pairs of beams.

**Add-on Unit**  
One upright frame and two pairs of beams.



**CAPACITY**  
7160 Lbs.  
PER LEVEL  
UDL

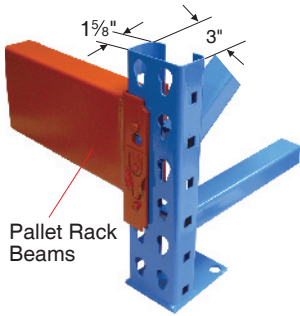
## Cross Bar



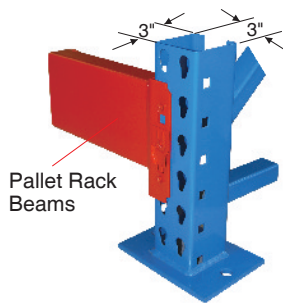
Model	Thickness	L"
BN640065	14Ga	36
BN640066	14Ga	42
BN640067	14Ga	48



# TEARDROP PALLET RACK



Pallet Rack Beams



Pallet Rack Beams

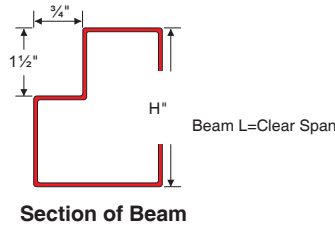


## Teardrop Upright 3" x 1 1/8"

H" x D"	Model
96 x 36	BN640068
96 x 42	BN640069
96 x 48	BN640070
120 x 36	BN640071
120 x 42	BN640072
120 x 48	BN640073
144 x 36	BN640074
144 x 42	BN640075
144 x 48	BN640076
168 x 36	BN640077
168 x 42	BN640078
168 x 48	BN640079
192 x 36	BN640080
192 x 42	BN640081
192 x 48	BN640082
216 x 36	BN640083
216 x 42	BN640084
216 x 48	BN640085
240 x 36	BN640086
240 x 42	BN640087
240 x 48	BN640088

## Teardrop Upright 3" x 3"

H" x D"	Model
96 x 36	BN640089
96 x 42	BN640090
96 x 48	BN640091
120 x 36	BN640092
120 x 42	BN640093
120 x 48	BN640094
144 x 36	BN640095
144 x 42	BN640096
144 x 48	BN640097
168 x 36	BN640098
168 x 42	BN640099
168 x 48	BN640100
192 x 36	BN640101
192 x 42	BN640102
192 x 48	BN640103
216 x 36	BN640104
216 x 42	BN640105
216 x 48	BN640106
240 x 36	BN640107
240 x 42	BN640108
240 x 48	BN640109



Beam L=Clear Span



End Clip, Interchangeable for both New and Old Tear Drop Style



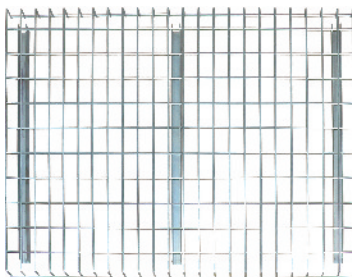
End Clip with Removable Safety Pins

## Beams

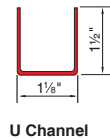
H" x L"	Cap. lbs. per pair	Model
3 x 48	6200	BN640110
3 x 96	3000	BN640111
3 x 108	2700	BN640112
3 x 120	2500	BN640113
3 1/2 x 48	6590	BN640114
3 1/2 x 96	4130	BN640115
3 1/2 x 108	3330	BN640116
3 1/2 x 120	2800	BN640117
4 x 96	5030	BN640118
4 x 108	4500	BN640119
4 x 120	4200	BN640120
4 x 144	3800	BN640121
4 1/2 x 96	6300	BN640122
4 1/2 x 108	5600	BN640123
4 1/2 x 120	5000	BN640124
4 1/2 x 144	4600	BN640125
5 x 96	6960	BN640126
5 x 108	6220	BN640127
5 x 120	5620	BN640128
5 x 144	5200	BN640129
5 1/2 x 96	6300	BN640130
5 1/2 x 108	5800	BN640131
5 1/2 x 120	5630	BN640132
5 1/2 x 144	5500	BN640133
6 x 96	6700	BN640134
6 x 108	6200	BN640135
6 x 120	6000	BN640136
6 x 144	5970	BN640137

## Wire Mesh Decking

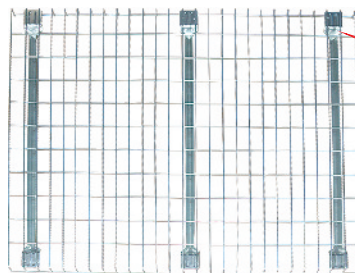
Strong open grid 4 gauge galvanized welded wire decking features welded construction and 14-gauge channel supports, permits light, air and sprinkler penetration, minimizes dust and debris accumulation. Easy installation, just drop into place over beams. Use beams that have 1 1/2" or 1 3/8" step. 2000 lbs capacity. Galvanized and powder coated available.



Decking with U Channel



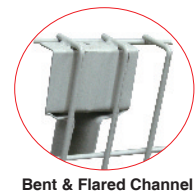
U Channel



Decking with V channel

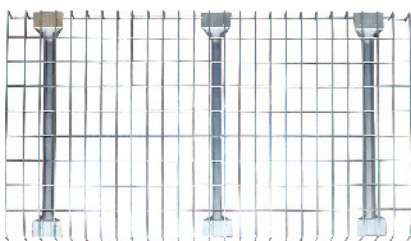


Flared Channel

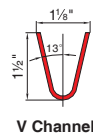


Bent & Flared Channel

Specify channel suffix: **U** channel (U)  
**V** channel (V)  
**F** Flared channel (F)  
**BF** Bent & flared channel (BF)



Decking with Flared Channel



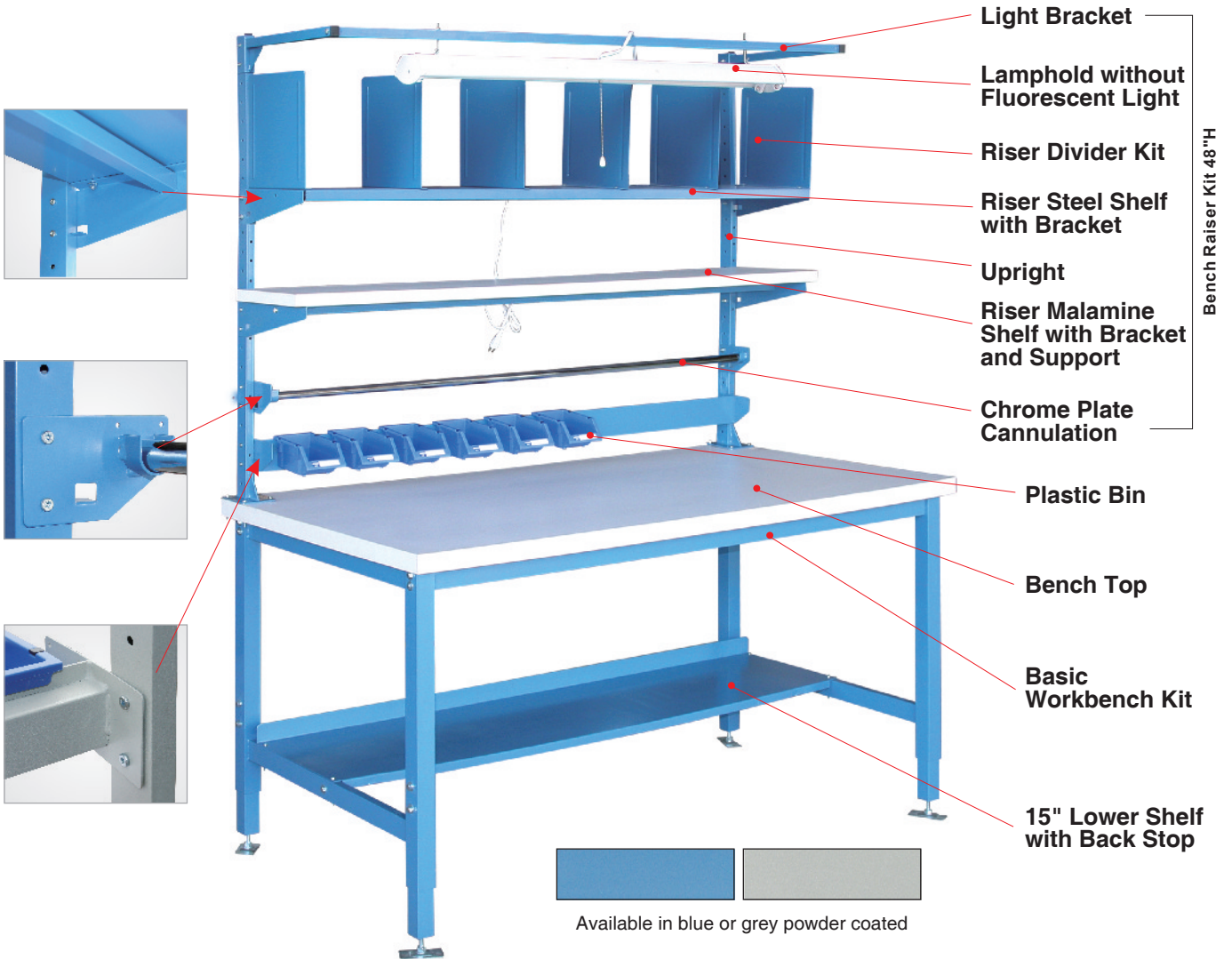
V Channel

D" x W"	Mesh	Model	D" x W"	Mesh	Model	D" x W"	Mesh	Model
24 x 36	2" x 4"	BN640138	24 x 36	2.5" x 4"	BN640154	24 x 36	2.5" x 4.5"	BN640170
24 x 42	2" x 4"	BN640139	24 x 42	2.5" x 4"	BN640155	24 x 42	2.5" x 4.5"	BN640171
24 x 48	2" x 4"	BN640140	24 x 48	2.5" x 4"	BN640156	24 x 48	2.5" x 4.5"	BN640172
24 x 52	2" x 4"	BN640141	24 x 52	2.5" x 4"	BN640157	24 x 52	2.5" x 4.5"	BN640173
36 x 36	2" x 4"	BN640142	36 x 36	2.5" x 4"	BN640158	36 x 36	2.5" x 4.5"	BN640174
36 x 42	2" x 4"	BN640143	36 x 42	2.5" x 4"	BN640159	36 x 42	2.5" x 4.5"	BN640175
36 x 48	2" x 4"	BN640144	36 x 48	2.5" x 4"	BN640160	36 x 48	2.5" x 4.5"	BN640176
36 x 52	2" x 4"	BN640145	36 x 52	2.5" x 4"	BN640161	36 x 52	2.5" x 4.5"	BN640177
42 x 36	2" x 4"	BN640146	42 x 36	2.5" x 4"	BN640162	42 x 36	2.5" x 4.5"	BN640178
42 x 42	2" x 4"	BN640147	42 x 42	2.5" x 4"	BN640163	42 x 42	2.5" x 4.5"	BN640179
42 x 48	2" x 4"	BN640148	42 x 48	2.5" x 4"	BN640164	42 x 48	2.5" x 4.5"	BN640180
42 x 52	2" x 4"	BN640149	42 x 52	2.5" x 4"	BN640165	42 x 52	2.5" x 4.5"	BN640181
48 x 36	2" x 4"	BN640150	48 x 36	2.5" x 4"	BN640166	48 x 36	2.5" x 4.5"	BN640182
48 x 42	2" x 4"	BN640151	48 x 42	2.5" x 4"	BN640167	48 x 42	2.5" x 4.5"	BN640183
48 x 48	2" x 4"	BN640152	48 x 48	2.5" x 4"	BN640168	48 x 48	2.5" x 4.5"	BN640184
48 x 52	2" x 4"	BN640153	48 x 52	2.5" x 4"	BN640169	48 x 52	2.5" x 4.5"	BN640185

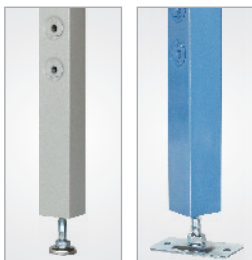
# PREMIUM ERGONOMIC WORKBENCH

**Premium Ergonomic Workbenches** come standard with rugged 2" square, 14 gauge tubular steel legs height adjusted from 28" to 34" high on 2" increments. 5,000 lbs capacity. Plastic, timber, stainless steel bench tops available in standard edge. Add stackable steel drawer with cylinder lock for convenient storage. Cabinet workbench is also a choice for safety storage. Powder coated finish for standard blue and grey, and any color available according to customer's requirement. Quick and easy assembly.

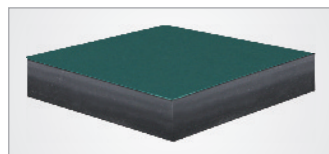
**Note: Riser shelf, light kit and bin rail require purchase of upright.**



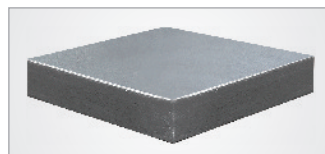
**Caster Leg**



**2 Adjustable Foot**



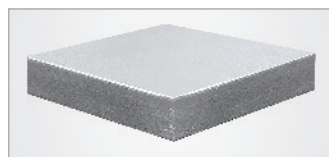
**Extra plastic**  
Superior anti-corrosion and shock absorption, Super strong and utility



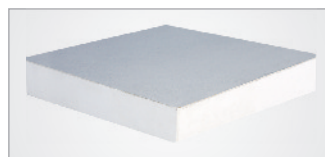
**Steel**  
Strong shock absorption, durable



**Timber**  
Super shock absorption high capacity and finished with a penetrating oil protectant. Table vice can be used.



**Stainless steel**  
Strong, neat, antirust and anti-corrosion, particle board core for durable.



**Plastic**  
Economy and utility

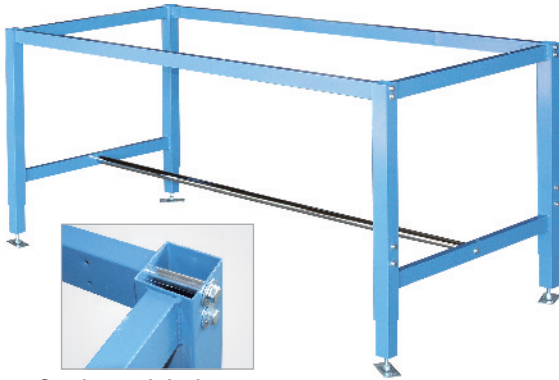


**Shop Top**  
Safety radius edge top and bottom, sealed with a catalyzed finish to resist liquids. Super strong MDF core.



# PREMIUM ERGONOMIC WORKBENCH

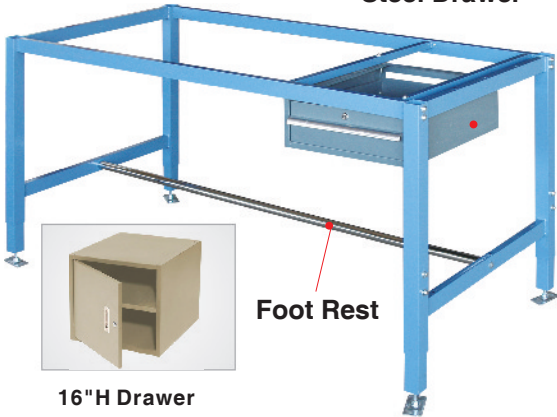
## Basic Workbench Kit



Go through bolt connect

## Drawer Workbench

### Steel Drawer



Foot Rest

16"H Drawer

## Cabinet Workbench Kit



## Accessories

Article	Model	Size	Article	Model	Size
<b>Basic Workbench Kit</b>	BN680001	48"L x 24"W	<b>Lower Shelf Kit</b>	BN680029	60"L
	BN680002	48"L x 30"W		BN680030	72"L
	BN680003	60"L x 24"W		BN680031	96"L
	BN680004	60"L x 30"W	<b>Bin Panel</b>	BN680032	48"L
	BN680005	60"L x 36"W		BN680033	60"L
	BN680006	72"L x 30"W		BN680034	72"L
	BN680007	72"L x 36"W		BN680035	96"L
	BN680008	96"L x 30"W	<b>Riser Divider Kit</b>	BN680036	60"L
	BN680009	96"L x 36"W		BN680037	72"L
BN680010	60"L x 30"W	BN680038		96"L	
<b>Cabinet Workbench Kit</b>	BN680011	72"L x 30"W	<b>Bin Rail</b>	BN680039	48"L
	BN680012	96"L x 30"W		BN680040	60"L
	BN680013	48"L		BN680041	72"L
<b>Light Bracket</b>	BN680014	60"L		BN680042	96"L
	BN680015	72"L	<b>Metal Drawer</b>	BN680043	6"H
	BN680016	96"L		BN680044	12"H
	BN680017	48"L		BN680045	16"H
<b>Riser Steel Shelf with Bracket</b>	BN680018	60"L	<b>Plastic Bin</b>	BN680046	7" x 4¾" x 3¾"
	BN680019	72"L	<b>Caster Leg</b>	BN680047	5" x 4¾" x 16¾"
	BN680020	96"L		<b>Upright</b>	BN680048
	<b>Chrome Plate Cannulation</b>	BN680021	48"L	<b>Riser Malamine Shelf with Bracket and Support</b>	BN680049
BN680022		60"L	BN680050		60"L
BN680023		72"L	BN680051		72"L
BN680024		96"L	BN680052		96"L
<b>15" Lower Shelf with Back Stop</b>	BN680025	48"L	<b>Lamphold without Fluorescent Light</b>	BN680053	48"
	BN680026	60"L			
	BN680027	72"L			
	BN680028	96"L			
<b>Bench Raiser Kit 48"H</b>	BN681001	60"L			
	BN681002	72"L			
	BN681003	96"L			

Riser Divider Kit

Bin Panel

Bin Rail

Lower Shelf Kit

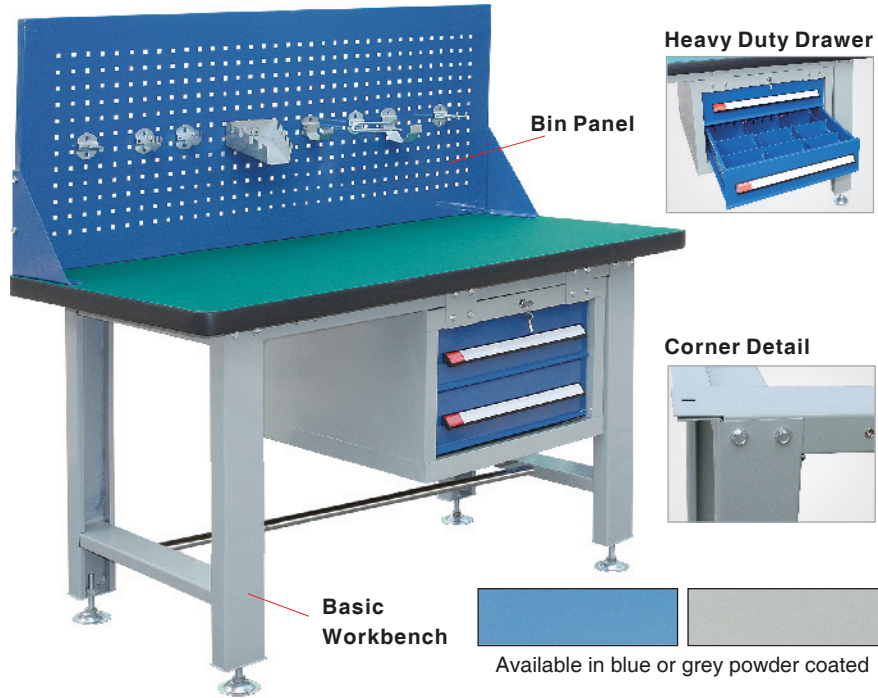
## Bench Top with Standard Edge

Material	Thickness	Model								
		48" x 24"	48" x 30"	60" x 24"	60" x 30"	60" x 36"	72" x 30"	72" x 36"	96" x 30"	96" x 36"
Extra Plastic	1 ¼"	BN680054	BN680055	BN680056	BN680057	BN680058	BN680059	BN680060	BN680061	BN680062
Steel	1 ¼"	BN680072	BN680073	BN680074	BN680075	BN680076	BN680077	BN680078	BN680079	BN680080
TIMBER	1"	BN680081	BN680082	BN680083	BN680084	BN680085	BN680086	BN680087	BN680088	BN680089
	2"	BN680090	BN680091	BN680092	BN680093	BN680094	BN680095	BN680096	BN680097	BN680098
Stainless Steel	1 ¼"	BN680099	BN680100	BN680101	BN680102	BN680103	BN680104	BN680105	BN680106	BN680107
Plastic	1 ¼"	BN680108	BN680109	BN680110	BN680111	BN680112	BN680113	BN680114	BN680115	BN680116
Shop Top	1"	BN680126	BN680127	BN680128	BN680129	BN680130	BN680131	BN680132	BN680133	BN680134
	2"	BN680135	BN680136	BN680137	BN680138	BN680139	BN680140	BN680141	BN680142	BN680143

# INDUSTRIAL WORKBENCH/ UTILITY TRUCK

## Industrial Workbench

Full welded structure for leg frame, 2" x 4" leg size, strong material of 14 gauge steel, 32" high. Capacity of 2000 lbs for 2" thick top, and 1000 lbs for 1.5" top. Can use table vice on timber top. Easy assemble. Suit for work shop, lab site, assemble and packing site.



Available in blue or grey powder coated

## Industrial Workbench

Article	Model	Size
<b>Basic Workbench</b> (Bench top not included)	BN690001	48"L x 24"W
	BN690002	48"L x 30"W
	BN690003	60"L x 24"W
	BN690004	60"L x 30"W
	BN690005	60"L x 36"W
	BN690006	72"L x 30"W
	BN690007	72"L x 36"W
<b>Drawer</b>	BN690008	H6" x 2PCS
	BN690009	H4" x 4PCS
<b>Bin Panel</b>	BN690010	48"L x 18" H
	BN690011	60"L x 18" H
	BN690012	72"L x 18" H

## Heavy Duty Utility Truck

Portable material handling system brings organization to sorting, receiving, inspection and shipping areas. Strong 18 gauge steel tube structure offers maximum durability. Rolls smoothly on 2 swivel, 2 rigid casters, handles on side for easy move. Clip-resistant powder coated finish. Choose single or double sided truck and hooks to best suit your needs.



Caster Adjustable Feet

## Heavy Duty Utility Truck with Adjustable Feet

Model	L" x W" x H"	Panel type	Remark
BN690013	37¾" x 24" x 61½"	3pcs SHP	Single Sided
BN690014		1pcs SHP+2pcs BP	
BN690015		2pcs SHP+1pcs BP	
BN690016	37¾" x 24" x 43¾"	6pcs SHP	Double sided
BN690017		2pcs SHP+4pcs BP	
BN690018		4pcs SHP+2pcs BP	

## Heavy Duty Utility Truck with Caster

Model	L" x W" x H"	Panel type	Remark
BN690019	37¾" x 24" x 43¾"	3pcs SHP	Single Sided
BN690020		1pcs SHP+2pcs BP	
BN690021		2pcs SHP+1pcs BP	
BN690022	37¾" x 24" x 43¾"	6pcs SHP	Double sided
BN690023		2pcs SHP+4pcs BP	
BN690024		4pcs SHP+2pcs BP	

SHP = Square Hole Panel; BP = Bin Panel



## Hook Accessories

### Double Hook

Model	L x W(mm)	Dia.
BN690025	25 x 35	Φ6
BN690026	50 x 35	
BN690027	75 x 35	

### U Hook

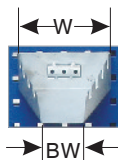
Model	L x W(mm)	Dia.
BN690028	72 x 36	Φ6
BN690029	25 x 55	
BN690030	20 x 36	

### Rod Hook

Model	Dia.
BN690031	Φ60
BN690032	Φ90

### Saw Hook

Model	L x H(mm)	Groove L x W(mm)
BN690033	64 x 36	15 x 7



### Wrench Hook

Model	L x W x BW (mm)	Groove L x W (mm)
BN690034	125 x 145 x 72	15 x 7

### Plier Hook

Model	L (mm)	Dia.
BN690035	150	Φ6
BN690036	100	



# SERVICE CART

## Plastic Service Cart 500lb Capacity

Structural rugged plastic service cart for all types of applications including industrial, office, medical and food preparation. No rust, dent, peel or chip, can be easily cleaned and virtually maintenance free. Comfort-grip push handle allows easy steering. Lightweight cart rolls easily on 2 swivel, 2 rigid non-marking casters. **Optional Full-Pneumatic Wheels available.** for a soft ride and easy rolling over rough surfaces. Flat pack and assembles easily.



BN690038

BN690039

## Plastic Service Cart

Model	Tray (L" x W" x H")	Overall (L" x W" x H")	Wheel	Number of Tray	Capacity (lbs)	N.W. (lbs)
BN690037	31 1/8 x 17 1/8 x 4 3/8	39 3/4 x 17 1/8 x 33 1/2	φ 5" x 1"	2	500	32
BN690038				3		41
BN690039	37 3/8 x 25 3/8 x 4 3/8	46 x 25 3/8 x 33 1/2	φ 5" x 1"	2	500	41
BN690040				3		55



Full-Pneumatic Wheel

## Steel Service Cart



BN690041

Organized and secure valuable tools, parts or assemblies with these all welded steel cabinets, stronger drawers hold 100lbs, open easily on side mounted tracks and lock with central cylinder lock. Aluminium full width handles for better grip and flush, catch-free front. Drawer divider available to make the space in the drawer as your want. 4 caster of 2 rigid and 2 swivel with brake. Option adjustable feet available.



Heavy Duty Drawer



Adjustable Feet



Caster



BN690043



BN690042

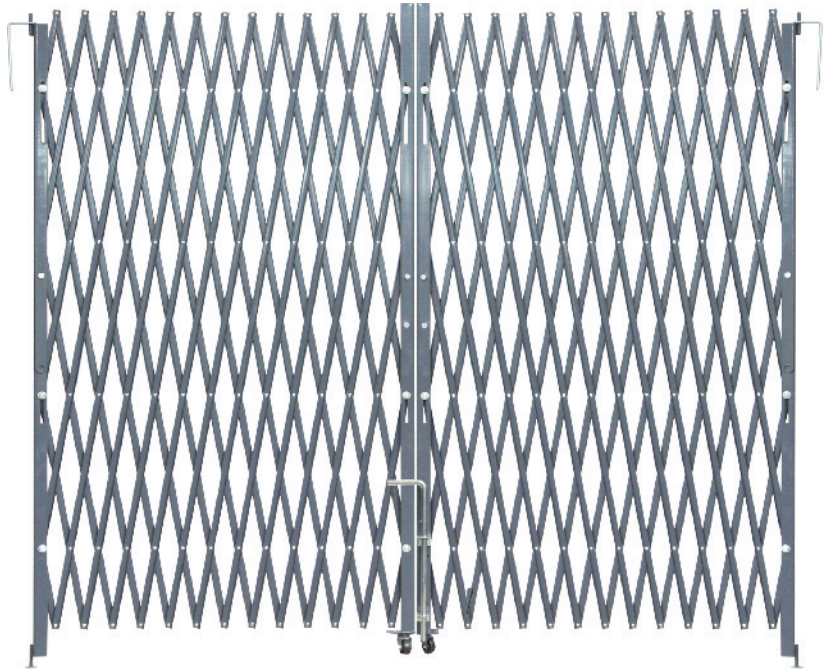
## Steel Service Cart

Article	Model	L" x W" x H"	Color	Drawer
Steel Service Cart with Caster	BN690041	23 3/8 x 17 1/8 x 34 3/8	RED/BLACK	H4" x 4; H8" x 1
	BN690042	23 3/8 x 17 1/8 x 38 3/8		H4" x 2; H6" x 2; H8" x 1
	BN690043	23 3/8 x 17 1/8 x 42 1/2		H4" x 3; H6" x 2; H8" x 1
	BN690044	23 3/8 x 17 1/8 x 34 3/8	TAN/BLUE	H4" x 4; H8" x 1
	BN690045	23 3/8 x 17 1/8 x 38 3/8	H4" x 2; H6" x 2; H8" x 1	
Steel Service Cart with Adjustable Feet	BN690046	23 3/8 x 17 1/8 x 42 1/2	RED/BLACK	H4" x 3; H6" x 2; H8" x 1
	BN690047	23 3/8 x 17 1/8 x 30 7/10		H4" x 4; H8" x 1
	BN690048	23 3/8 x 17 1/8 x 34 3/8		H4" x 2; H6" x 2; H8" x 1
	BN690049	23 3/8 x 17 1/8 x 38 3/8	H4" x 3; H6" x 2; H8" x 1	
	BN690050	23 3/8 x 17 1/8 x 30 7/10	TAN/BLUE	H4" x 4; H8" x 1
	BN690051	23 3/8 x 17 1/8 x 34 3/8	H4" x 2; H6" x 2; H8" x 1	
	BN690052	23 3/8 x 17 1/8 x 38 3/8	H4" x 3; H6" x 2; H8" x 1	

# STEEL FOLDING GATE/ WINDOW GUARD/BARRIER

**Steel Folding Gates** are designed to secure dock doors, receiving doors, doorways, garage and service doors, hallways and entrance ways up to 12 feet wide without sacrificing visibility or air circulation.

- Heavy duty steel U channel webbing
- Riveted back to back with high quality steel galvanized rivets.
- Heavy-duty 1½" × 1½" vertical member angles.
- Solid steel casters.
- Locks on the right standard, and locking on the left available upon request.
- Locking bar included. Padlock order separately.
- Custom sizes, galvanized and powder coated colors available.
- Gates loose 6' in height when extended.



"L" bracket mounting gate to wall



Bottom pin inserted into floor hole



Gates fold completely swing 180°



Metal durable wheel



Bolt for double gate, can be knocked down

## Single Folding Gate

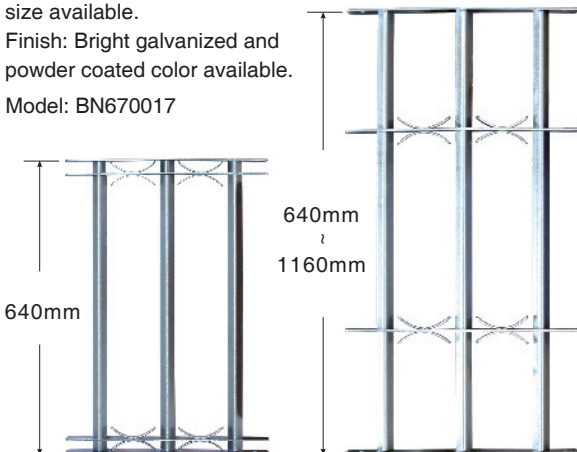
Model	W' × H'	Width" Retracted
BN670001	5.5 × 5	10
BN670002	5.5 × 6.5	12.5
BN670003	5.5 × 8	14
BN670004	6.5 × 6.5	13
BN670005	6.5 × 8	15
BN670006	7.5 × 6.5	14.5
BN670007	7.5 × 8	18

## Double Folding Gate

Model	W' × H'	Width" Retracted
BN670010	10 × 5	10
BN670011	10 × 6.5	12.5
BN670012	10 × 8	14
BN670013	12 × 6.5	13
BN670014	12 × 8	15
BN670015	16 × 6.5	14.5
BN670016	16 × 8	18

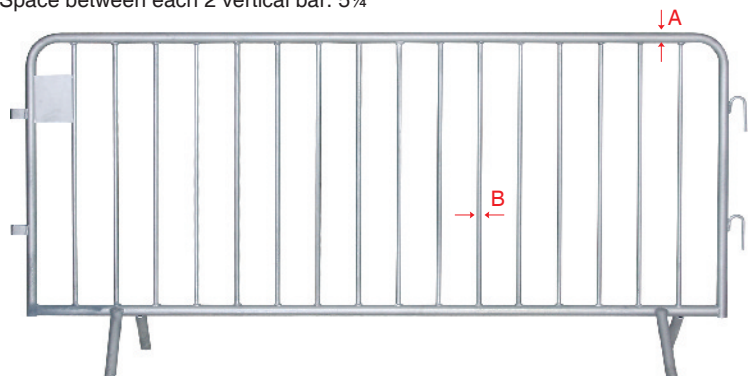
## Height Adjustable Window Guard

Heavy duty steel strip 35mm wide and 4mm thickness for frame, and 20 × 20 × 3mm tri-angle steel for grid. Height adjustable from 640mm to 1160mm, width of 450mm, safety thief guard for your window. Customer size available. Finish: Bright galvanized and powder coated color available. Model: BN670017



## Crowd Control Barrier

Direct pedestrians with these all-welded steel barrier. Easy to transport and storage. Section include the couplers that join units in runs of any length. Standard size: 102" long × 40" high. Space between each 2 vertical bar: 5¼"



Standard Size (mm)	Model		
	BZP	Hot Galv.	Powder Coated
A: Φ32 × 2 B: Φ16 × 1.2	BN670018	BN670021	BN670024
A: Φ35 × 2 B: Φ16 × 1.2	BN670019	BN670022	BN670025
A: Φ41 × 2 B: Φ16 × 1.2	BN670020	BN670023	BN670026



# BARRICADE GATE / PORTABLE FOLDING GATE / EXPANDING BARRIER



Perfect for temporary access control. Seal off hazards and protect against accidents. You can block access to any area temporarily for maintenance, cleaning and repair work but still allow multiple entrance. Ideal for warehouses or factories, and for restricting aisle access in retail environments. Riveted back to back with high quality galvanised steel rivets; the rivets hold up to more stress and will not rust or crack and the webbing won't separate. Multiple gates can be connected end to end to form longer runs.

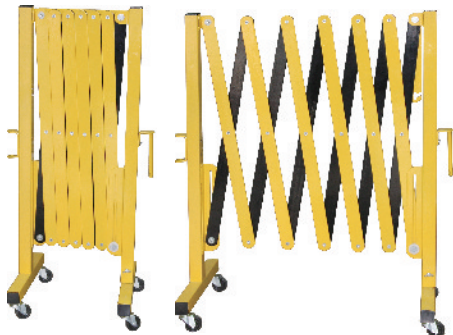
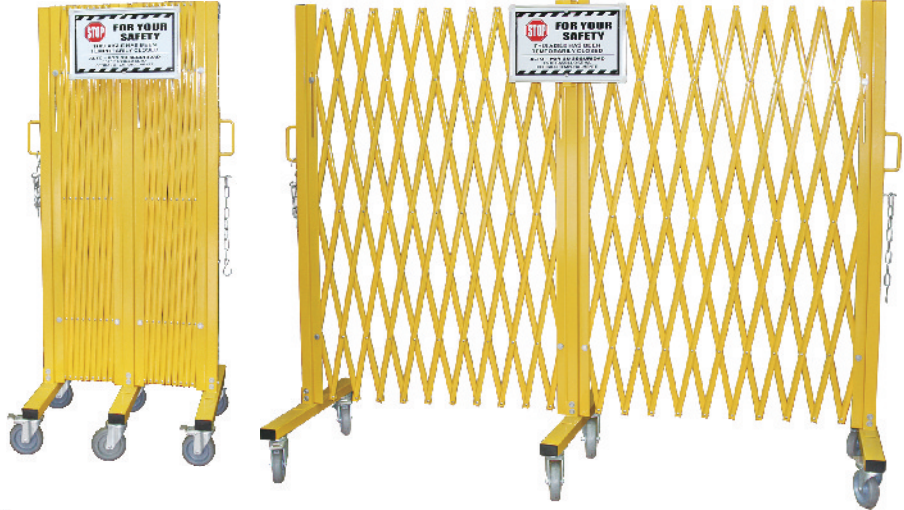
## Heavy Duty Barricade Gate

### Specifications:

- 1) Dimensions : 23½" L x 24" W x 64" H
- 2) Expanded dimensions : 20' L x 52½" H
- 3) Weight: 154lbs
- 4) Moves easily on six 5" casters, (4 brake, 2 swivel)
- 5) Includes warning sign

## Heavy Duty Barricade Gate

Material	Model	Weight (lbs)
Steel	BN670027	154



## Light Duty Barricade Gate

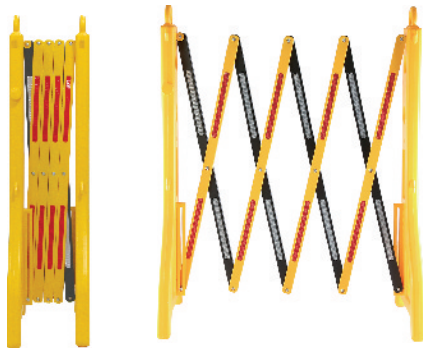
Material	Model	Weight (lbs)
Steel	BN670028	45
Aluminium	BN670029	25

## Light Duty Barricade Gate

### Specifications:

- 1) Dimensions : 16" L x 15" W x 40" H
- 2) Expanded dimensions : 135" L x 40" H
- 3) Moves easily on four 2" casters
- 4) Finish: powder coated, yellow and black or red and white

**Material:** heavy duty steel or heavy duty aluminium



## Plastic Barricade

Material	Model	Weight (lbs)
Plastic	BN670031	5

## Plastic Barricade

### Specifications:

- 1) Dimensions: 9.5" L x 15" W x 38" H
- 2) Expanded dimensions : 100" L x 38" H
- 3) with Silver and red reflective tape on rod
- 4) Finish: yellow and black

**Material:** Plastic, reflective tape

## Barrier Guard Polypropylene

Blow mold, including one barrier two turntable legs. Can be jointed to a line to direct the way or divide the road to two parts, and can be circled for repair work area.

Dimensions: 78" L x 2.2" W x 48" H

Weight: 29 lbs

**Material:** Polypropylene, rubber, reflective tape

## Barrier Guard Polypropylene

Model	Overall Size L" x W" x H"	Color
BN8080101	78 x 2.2 x 48	Yellow
BN8080102	78 x 2.2 x 48	Red



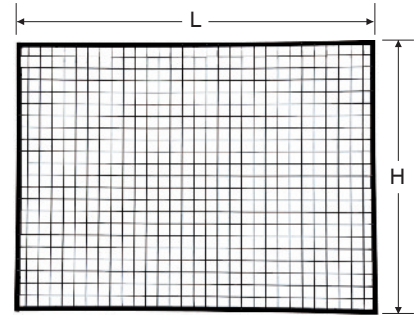
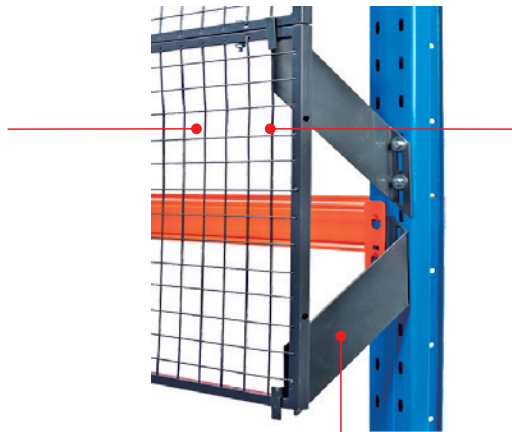
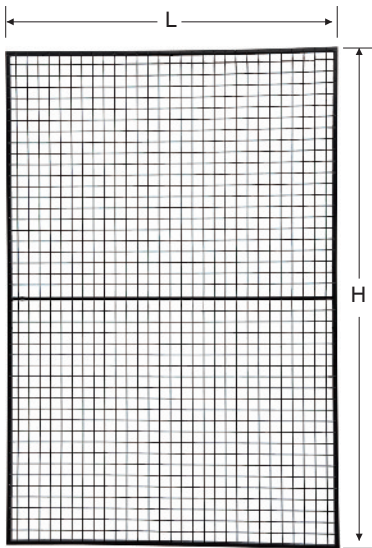
# RACK GUARDIAN ANTI-COLLAPSE MESH SYSTEM



Designed to create a physical barrier between warehouse operatives and dislodged goods, the Rack Guardian Anti-collapse meshed system is a simple modular based anti-collapse solution compatible with all major makes of pallet racking systems.

Easy to install, the pre-drilled mesh panels are simply bolted together and secured to the uprights using a range of universal stand-off brackets. To achieve an optimum fit panels both horizontally and vertically, can be cut to size and finished with a U-profile to enclose exposed wires.

Should the RG anti-collapse system be required to be installed above the racking, various sized RG-extensions can be bolted to create additional height.



## Mesh Panel

Model	Size L x H(mm)
BN8050201	1500 x 1125
BN8050202	1200 x 1125
BN8050203	1000 x 1125
BN8050204	700 x 1125

## Mesh Panel

Model	Size L x H(mm)
BN8050101	1500 x 2250
BN8050102	1200 x 2250
BN8050103	1000 x 2250
BN8050104	700 x 2250

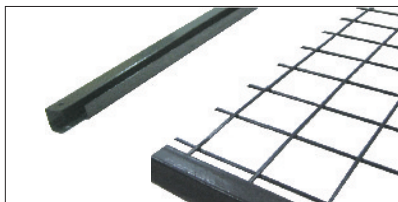


## Bracket

Model	Size D(mm)
BN8050301	50
BN8050302	100
BN8050303	150
BN8050304	200
BN8050305	250
BN8050306	300

## U-Profile

Model	Size L(mm)
BN8050401	2250
BN8050402	1500
BN8050403	1200
BN8050404	1125
BN8050405	1000
BN8050406	700



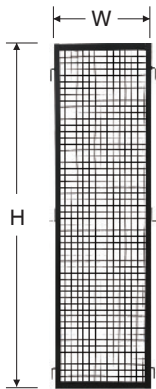
## Hardware

Model	Size(mm)
BN8050501	M8 x 45



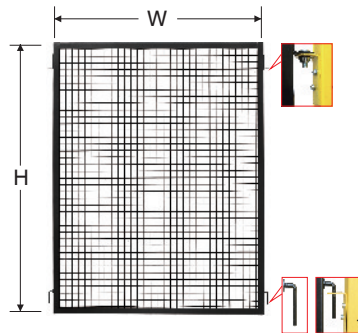
# MACHINE GUARD

All-steel, welded wire mesh panel, hinged doors and post system held in place with pins, brackets, and safety nuts. Allows up to 12" sweep and can be reconfigured. Safety socket wrench is included. Meets ANSI and OSHA standards.



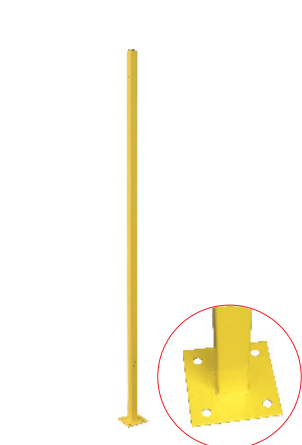
Wire Mesh Panel

Model	Size W' x H'
BN8020101	5 x 7
BN8020102	4 x 7
BN8020103	3 x 7
BN8020104	2 x 7



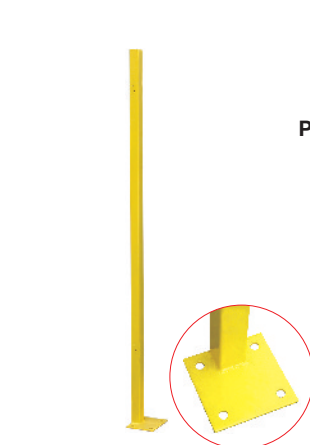
Wire Mesh Panel

Model	Size W' x H'
BN8020201	8 x 5
BN8020202	5 x 5
BN8020203	4 x 5
BN8020204	3 x 5
BN8020205	2 x 5



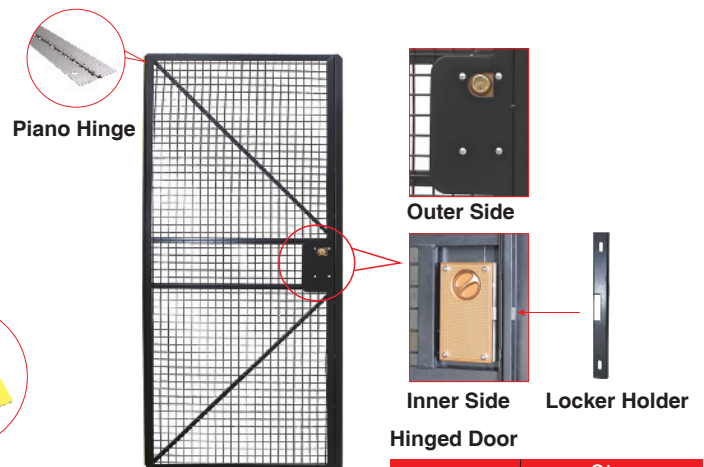
In Line Post

Model	Size H'
BN8020301	8
BN8020303	6



Corner Post

Model	Size H'
BN8020302	8
BN8020304	6

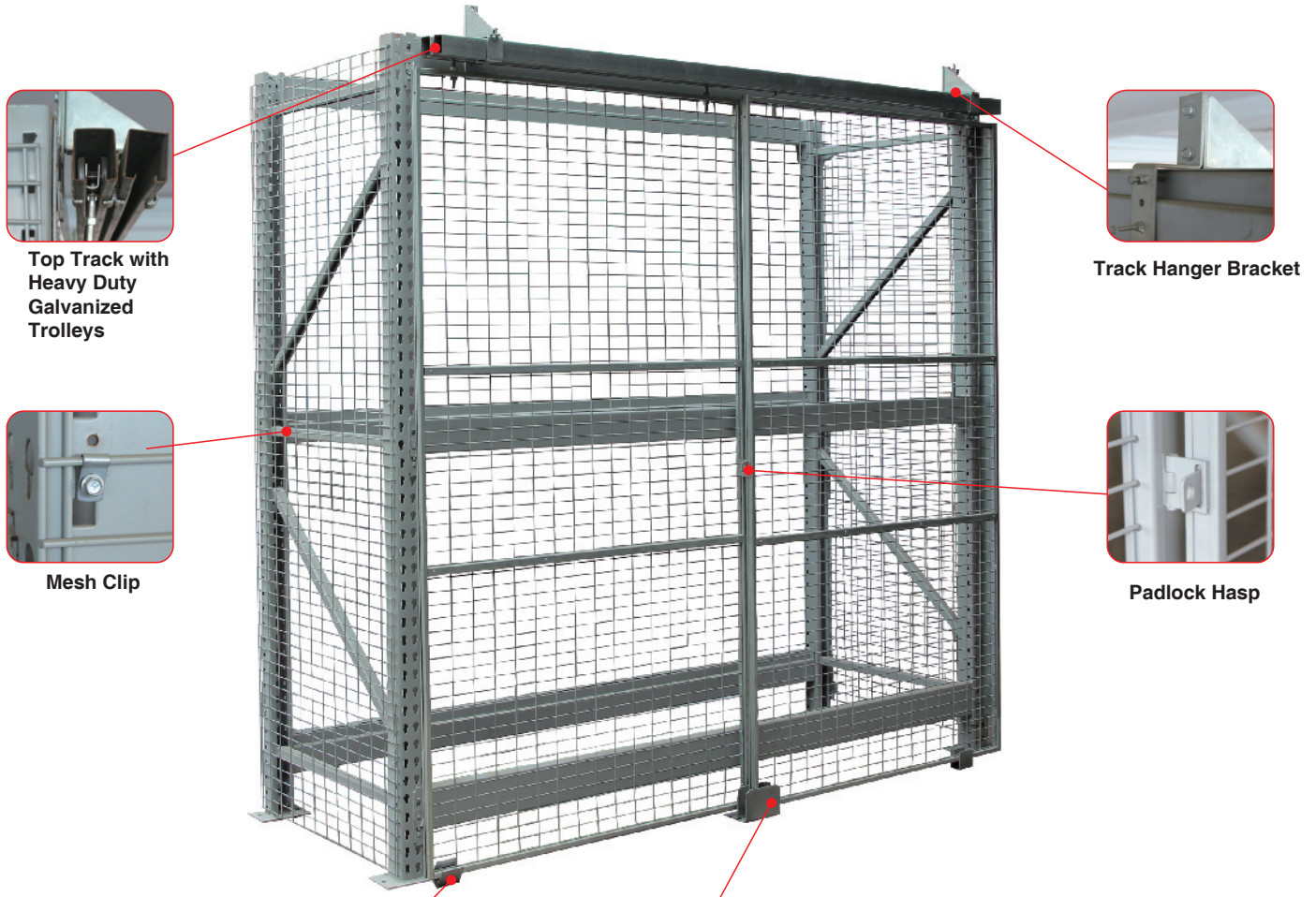


Hinged Door

Model	Size W' x H'
BN8020401	4 x 7
BN8020402	3 x 7
BN8020403	4 x 5

# PALLET RACKING SECURITY ENCLOSURE KIT

Stronger steel mesh structure allow visible ventile to separate room, (2) side panels, (2) bi-parting doors, trolley, door track and lower door guides. Custom solution for securing your racking units without limiting accessibility. Mounted on a galvanized steel top track with heavy-duty galvanized trolleys, our rack enclosure are built strong for serious industrial applications. The fully-suspended design allows for easy access when using forklifts, pallet jacks and other in-plant vehicles. Sliding gates are framed in structural angle and reinforced with tubing on both sides for superior rigidity. Custom built to your specific needs, pallet racking enclosure kit are ideal for safeguarding inventory in racking and picking areas. Use them to control traffic and limit circulation along sensitive alley ways. Standard accessories include padlock hasps. Optional back panel and side panel. All gates are sealed in a grey powder-coated finish for maximum durability.



**Top Track with Heavy Duty Galvanized Trolleys**



**Track Hanger Bracket**



**Mesh Clip**



**Padlock Hasp**



**Single Door Guide**



**Double Door Guide**

## Pallet Racking Enclosure Kit

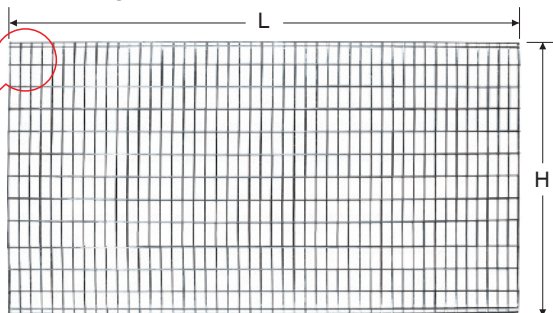
Model	Overall Size L" x D" x H"
BN8030101	96 x 36 x 96
BN8030102	96 x 42 x 96
BN8030103	96 x 48 x 96
BN8030104	120 x 36 x 96
BN8030105	120 x 42 x 96
BN8030106	120 x 48 x 96
BN8030107	144 x 36 x 96
BN8030108	144 x 42 x 96
BN8030109	144 x 48 x 96

## Optional Back Mesh Panel

Model	Overall Size L" x H"
BN8030201	96 x 48
BN8030202	120 x 48
BN8030203	144 x 48



**Mesh Clip**



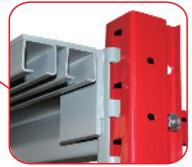
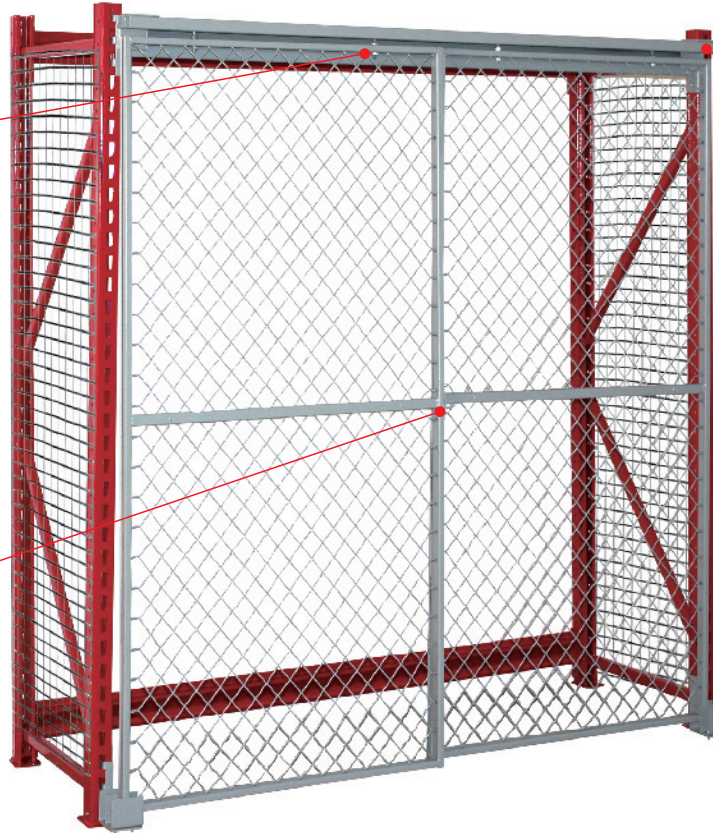
**Optional Back Mesh Panel**



# PALLET RACKING SECURITY ENCLOSURE KIT



Stronger steel mesh structure allow visible ventile to separate room, (2) side panels, (2) bi-parting doors, trolley, door track and lower door guides. Custom solution for securing your racking units without limiting accessibility. Mounted on a powder coated top track with smooth bearing trolleys, our rack enclosure are built strong for serious industrial applications. The fully-suspended design allows for easy access when using forklifts, pallet jacks and other in-plant vehicles. Custom built to your specific needs, pallet racking enclosure kit are ideal for safeguarding inventory in racking and picking areas. Use them to control traffic and limit circulation along sensitive alley ways. Standard accessories include padlock hasps. Optional back panel and side panel. All gates are sealed in a grey powder-coated finish for maximum durability.



**Top Track with Smooth Bearing Trolleys**



**Double Door Guide**



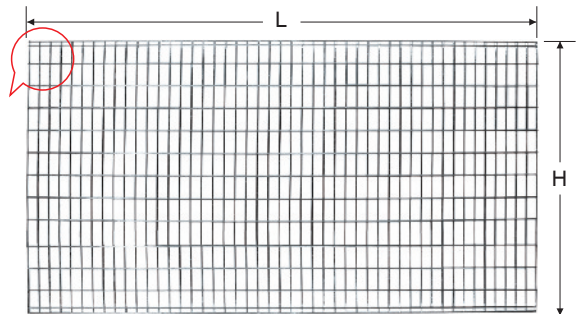
**Bearing Trolley Inside**



**Padlock Hasp**



**Mesh Clip**



## Pallet Racking Enclosure Kit

Model	Overall Size L" x D" x H"
BN8030301	60 x 36 x 72
BN8030302	60 x 42 x 72
BN8030303	60 x 48 x 72
BN8030304	72 x 36 x 72
BN8030305	72 x 42 x 72
BN8030306	72 x 48 x 72
BN8030307	96 x 36 x 72
BN8030308	96 x 42 x 72
BN8030309	96 x 48 x 72
BN8030310	60 x 36 x 96
BN8030311	60 x 42 x 96
BN8030312	60 x 48 x 96
BN8030313	72 x 36 x 96
BN8030314	72 x 42 x 96
BN8030315	72 x 48 x 96
BN8030316	96 x 36 x 96
BN8030317	96 x 42 x 96
BN8030318	96 x 48 x 96

## Optional Back Mesh Panel

Model	Overall Size L" x H"
BN8030401	60 x 36
BN8030402	72 x 36
BN8030403	96 x 36
BN8030404	60 x 48
BN8030405	72 x 48
BN8030406	96 x 48

# WOVEN WIRE MESH SECURITY PARTITION

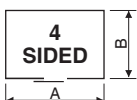
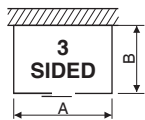
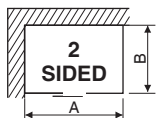
## Complete Wire Mesh Security Room

Woven wire mesh security rooms provide high-visibility security, safety, protection and access control. These pre-designed rooms are available with or without a roof, in 2, 3 and 4 sided configurations. Constructed from high quality 10 gauge steel wire, woven into an extremely strong frame for heavy-duty strength and enhanced appearance. Modular components makes installation easy, usually requires no change to existing heating, lighting or ventilation system. Components bolt together quickly and can be easily relocated. Long-lasting maintenance-free powder coat gray finish. Available in 7', 8' and 10' high in five standard sizes ranging from 10' x 10' to 30' x 20'. All models can include a 5' W x 8' H sliding gate or hinged door with mortise cylinder lock, or service window as required.



### Specifications

- 10 Gauge steel wire woven into 1½" diamond mesh, securely clinched to framing.
- Vertical frames to be 1¼" x 5/8" cold rolled 'C' steel channels with ¼" bolt holes.
- Horizontal frames to be 1" x ½" cold rolled steel channels.
- All joints to be mortised and tenoned.
- Center reinforcing bar to be two cold rolled steel channels 1" x 3/8" riveted through wire mesh at 3'6" from floor, additional bar required for 12' high partition.
- Top capping bar to be 1½" x 1" cold rolled steel channel, with ¼" bolts 30" O.C.
- Corner posts to be 1¼" x 1¼" steel angles with ¼" bolt holes.
- Floor sockets to be cast aluminum.
- Door frames to be 1¼" x ½" cold rolled steel channel.
- Sliding doors to have two four-wheel roller bearing truck/hangers enclosed in a galvanized steel box track and one steel channel bottom guide.
- Hinge doors to have 1½ pairs of butt hinges bolted to door and transom frame.
- Locking to be hasps arranged for padlocking, or specify: cylinder mortise type lock operated by key outside, recessed knob inside.
- All partitions to have 3" sweep space and include hardware and accessories for proper installation, specify partition to wall connection hardware separately.
- Finish to be powder coated.



Room without Roof				Room with Roof		
2 Sides	3 Sides	4 Sides		2 Sides	3 Sides	4 Sides
Model	Model	Model	A' B' Ht'	Model	Model	Model
BN660001	BN660016	BN660031	10 10 7	BN660046	BN660061	BN660076
BN660002	BN660017	BN660032	20 10 7	BN660047	BN660062	BN660077
BN660003	BN660018	BN660033	20 15 7	BN660048	BN660063	BN660078
BN660004	BN660019	BN660034	20 20 7	BN660049	BN660064	BN660079
BN660005	BN660020	BN660035	30 20 7	BN660050	BN660065	BN660080
BN660006	BN660021	BN660036	10 10 8	BN660051	BN660066	BN660081
BN660007	BN660022	BN660037	20 10 8	BN660052	BN660067	BN660082
BN660008	BN660023	BN660038	20 15 8	BN660053	BN660068	BN660083
BN660009	BN660024	BN660039	20 20 8	BN660054	BN660069	BN660084
BN660010	BN660025	BN660040	30 20 8	BN660055	BN660070	BN660085
BN660011	BN660026	BN660041	10 10 10	BN660056	BN660071	BN660086
BN660012	BN660027	BN660042	20 10 10	BN660057	BN660072	BN660087
BN660013	BN660028	BN660043	20 15 10	BN660058	BN660073	BN660088
BN660014	BN660029	BN660044	20 20 10	BN660059	BN660074	BN660089
BN660015	BN660030	BN660045	30 20 10	BN660060	BN660075	BN660090

**SLIDING SERVICE WINDOW** Mounted in 5' wide panel. Padlockable. Includes 12" D shelf. Add suffix A to any model above.

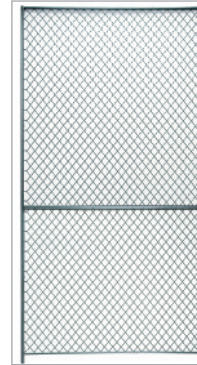


# WOVEN WIRE MESH SECURITY PARTITION

## Accessories for Build Your Own

### Basic Panel

7' High		8' High		10' High	
Model	W'	Model	W'	Model	W'
BN660107	1	BN660108	1	BN660110	1
BN660207	2	BN660208	2	BN660210	2
BN660307	3	BN660308	3	BN660310	3
BN660407	4	BN660408	4	BN660410	4
BN660507	5	BN660508	5	BN660510	5



Basic Panel



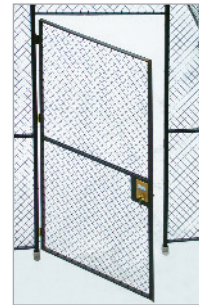
Adjustable Panel

### Adjustable Panel

7' High		8' High		10' High	
Model	W"	Model	W"	Model	W"
BNAP0707	2½ to 12	BNAP0708	2½ to 12	BNAP0710	2½ to 12

### Single Hinged Door with Frame

7' High		8' High		10' High	
Model	W'	Model	W'	Model	W'
BNHS7307	3	BNHS7308	3	BNHS7310	3
BNHS7407	4	BNHS7408	4	BNHS7410	4



Single Hinged Door with Transom



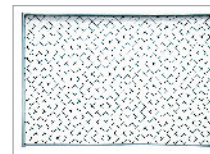
Single Sliding Door with Transom

### Single Sliding Door with Transom | Single Sliding Doors-full Height

8' High		10' High		8' High		10' High	
Model	W'	Model	W'	Model	W'	Model	W'
BNSS7308	3	BNSS7310	3	BNSSF508	5	BNSSF510	5
BNSS7408	4	BNSS7410	4	BNSSF608	6	BNSSF610	6
BNSS7508	5	BNSS7510	5	BNSSF808	8	BNSSF810	8
BNSS7608	6	BNSS7610	6				

### Transom Panel

Model	H' x W'	Model	H' x W'	Model	H' x W'	Model	H' x W'
BNTP7103	1 x 3	BNTP7104	1 x 4	BNTP7303	3 x 3	BNTP7304	3 x 4
BNTP7203	2 x 3	BNTP7204	2 x 4	BNTP7205	2 x 5	BNTP7206	2 x 6



Transom Panel



Trace Kit for Sliding Door

### Trace Kit for Sliding Door

Model	L'	Model	L'
BNTK7103	4	BNTK7104	6

### Corner Post

7' High	8' High	10' High
Model	Model	Model
BNCP7107	BNCP7108	BNCP7110

### Channel Stiffener Post

7' High	8' High	10' High
Model	Model	Model
BNLP7107	BNLP7108	BNLP7110



Corner Post



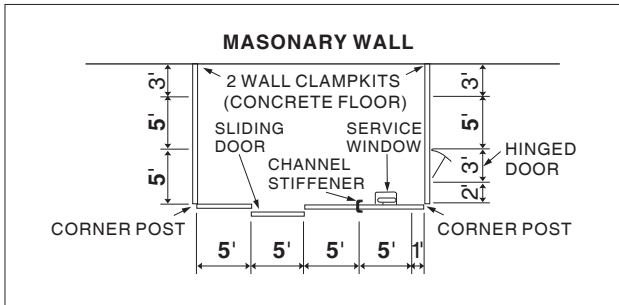
Channel Stiffener Post

### Other Parts

						
BN663124 Wall Clip Kit	BN663130 T Splice Channel	BN663128 Corner Splice Channel	BN663126 Straight Splice Channel	BN663131 3 Keys for Mortise Lock	BN663132 Door Hasp Padlock Kit	BN663136 Aluminium Floor Socket
						
BN663138 Mortise Doorlock w/2 Key	BN663137 Hardware Bag for Wire Partition	BN663146 10' Top Capping	Service Window Closed	BN663142 5' x 8' Service Window		

# WOVEN WIRE MESH SECURITY PARTITION

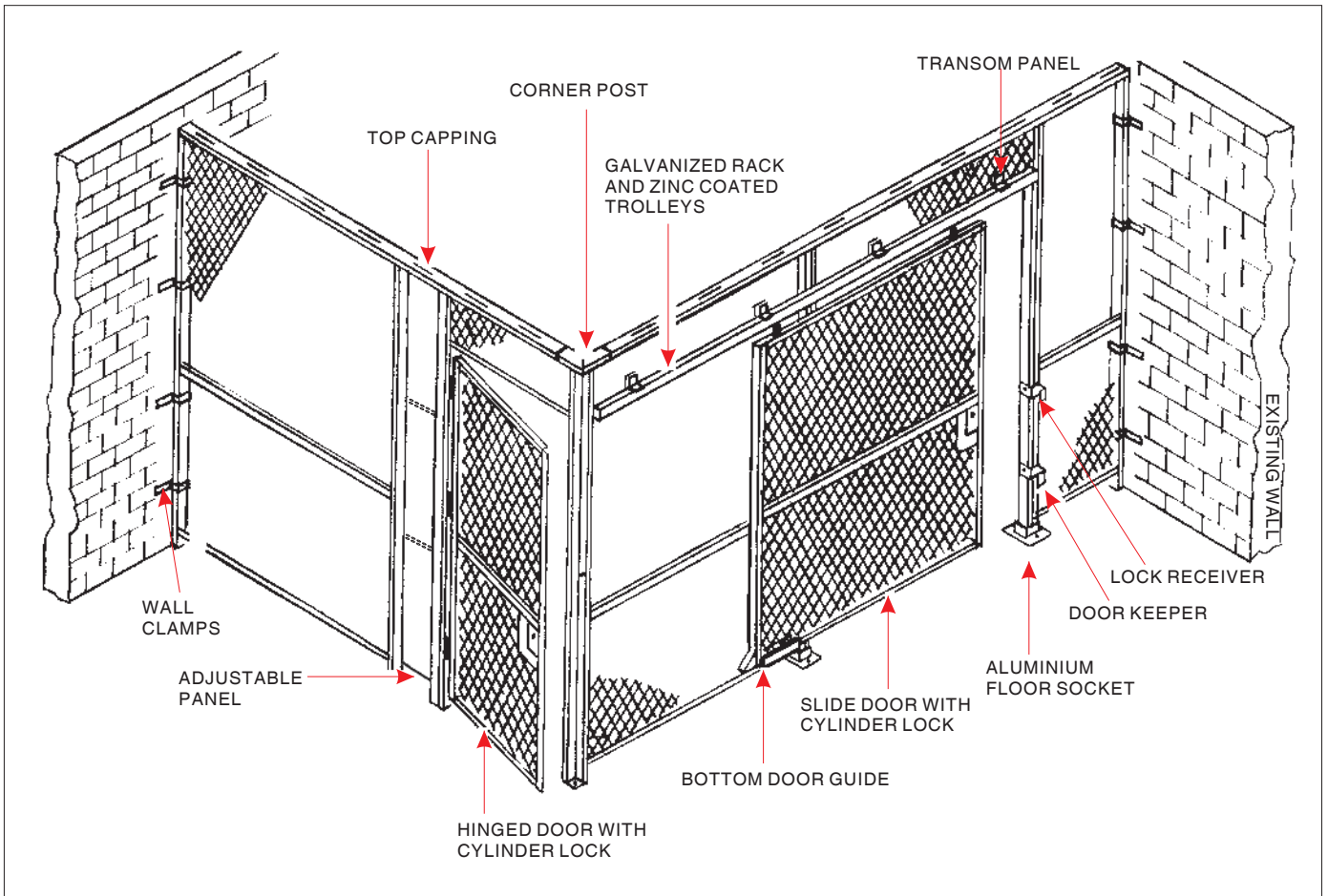
## Easy to Plan and Order Modular Components



TOP VIEW OF A 3-SIDED PARTITION (21' WIDE BY 13' DEEP)

- 1, Make a floor plan include measurements. Determining partition height, 7', 8', 10'.
- 2, Indicate doors, gates and service windows and their size and location. Show the direction of the slide gate or hinged door either left- or right-handed and swing in or out.
- 3, Be sure to utilize as many 5'. wide panels as possible for most efficient cost. Add one channel stiffener post for every 2 panels. (Stiffener posts are needed for each door and gate).
- 4, If partition is to be installed between two walls, you may want to use the adjustable panel from stock instead of a special width often required. Wall clamp kit for each partition to wall connection. Use corner posts, or adjustable corner posts at all corners.
- 5, Top capping in 10-foot section must needed in the construction. Calculate the total linear feet and round up to the nearest multiple of 10, then divide by 10 for the number of top capping sections. Example: Actual 95'5" linear feet: order 10 top capping sections (100 ft total).

## Convenient to Installation

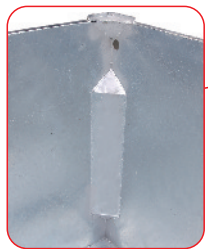


- 1, 2 people needed to assemble partition at least.
- 2, If starting at an existing wall, start first panel from wall, if it is a free-standing room, start at a corner.
- 3, Bolt panels together loosely. **Do not secure floor sockets to the floor until fully assembled.**
- 4, install channel stiffener posts every 10-15 feet. Channel stiffener posts are needed for doors.
- 5, After all panels and doors are assembled, attached top capping channel. Top capping channel should span panels and splices should be in the middle of a panel for maximum strength.
- 6, Tighten all panel bolts.
- 7, Attach floor sockets using appropriate hardware.

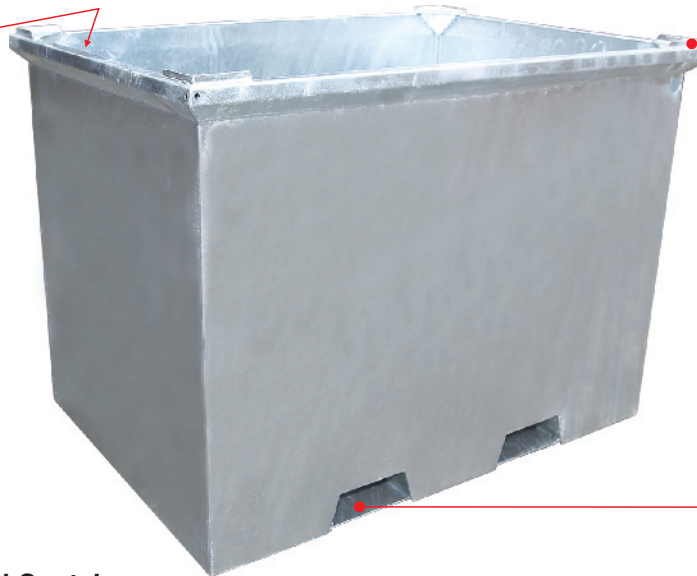


# HEAVY DUTY RIGID STEEL CONTAINER MOBILE VISIBLE SECURITY CAGE

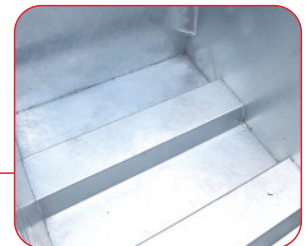
Rated at 4000 lbs. capacity and stackable 4 to 5 high.  
 Made with durable 13 ga steel sides and 12 ga steel base.  
 Ideal for storing forgings, castings and machine parts.  
 Move more material, cut handling time, prevent product damage, save floor space and better utilize air space.  
 Durable hot galvanized finish and custom colors are available.  
 Custom designs of rigid or collapsible steel containers are our specialty.



Reinforce in 4 Corners



Stopper for Stack



Space for Forklift

## Heavy Duty Rigid Steel Container

Model	Overall Size W x D x H (mm)
BN8090101	1200 x 1100 x 1500

2 tier mobile security cage which will hold up to 1000 lbs lockable double doors (padlock not provided) are fitted and easy steering on the 200mm nylon wheels.

The frame and base are in 25mm x 25mm x 1.5mm square hollow section which gives high strength without excessive weight. 50mm x 75mm x 4mm welded mesh infilled walls, door and roof panels give total security with full visibility.

Can also design and manufacture special for customer.

Finish: powder coated or zinc plated available



## Mobile Visible Security Cage

Model	Overall Size L x W x H (mm)	Caster Size & Type	Weight (lbs)
BN8120101	1100 x 760 x 1800	4" Nylon 2 fixed, 2 swivel	200

# CYLINDER CADDY

Transport gas cylinders safely with these caddies, hold cylinder tank up to 9.5" in diameter, capacity up to 4-8, and 800lbs, safety chains to hold tanks in place, all steel construction, powder coated finish



Welded Bolt on the U Post



Chain for Securing



Easy Assemble



Flat Pack

## Cylinder Caddy

Model	Overall Size L" x W" x H"	Cylinder Capacity	Capacity (lbs)
BN8040101	24½ x 38 x 35½	4	400
BN8040102	35½ x 38 x 35½	6	600
BN8040103	46½ x 38 x 35½	8	800

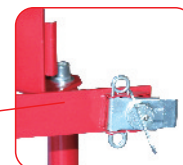
Transport gas cylinders safely with these caddies for narrow access, hold cylinder tank up to 9.5" in diameter, capacity up to 2-4, and 200-400lbs, safety chains to hold tanks in place, all steel construction, powder coated finish



Chain for Securing



Easy Assemble



Rotate the knife to let the clip reach the clip on the top arm



Rotate the knife at the opposite direction for lock tight



Flat Pack

## Cylinder Caddy Narrow

Model	Overall Size L" x W" x H"	Cylinder Capacity	Capacity (lbs)
BN8040201	20 x 16 x 39	2	200
BN8040202	39 x 16 x 39	4	400



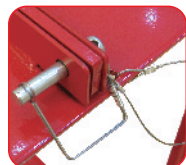
# GAS CYLINDER TRUCK

## Gas Cylinder Truck 8 in 1

For storage and move the tank easily with 4" polyolefin wheel(optional), a hidden steel ramp can be pulled out **double side** for easily move the tank in and out of the truck when wheel applied, tank dia. 7" to 9", red powder coated, steel material, 8 cylinders capacity and 800lbs load.



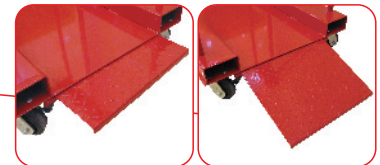
Bar for Separate and Lockable



Security Pin



Easy Assemble



Steel ramp can be pulled out for easily move and pull the tank in and out of the truck

## Cylinder Caddy 8 in 1

Model	Overall Size L" x W" x H"	Wheel	Ramp	Capacity
BN8040301	43 x 34 x 41	-	-	800lbs
BN8040302	43 x 34 x 46	4" polyolefin	yes	800lbs



## Gas Cylinder Truck 6 in 1

For storage and move the tank easily with 4" polyolefin wheel (optional), a hidden steel ramp can be pulled out for easily move the tank in and out of the truck when wheel applied, tank dia. 7" to 9", red powder coated, steel material, 6 cylinders capacity and 600lbs load.



## Gas Cylinder Truck 4 in 1

For storage and move the tank easily with 4" polyolefin wheel (optional), a hidden steel ramp can be pulled out for easily move the tank in and out of the truck when wheel applied, tank dia. 7" to 9", red powder coated, steel material, 4 cylinders capacity and 400lbs load.

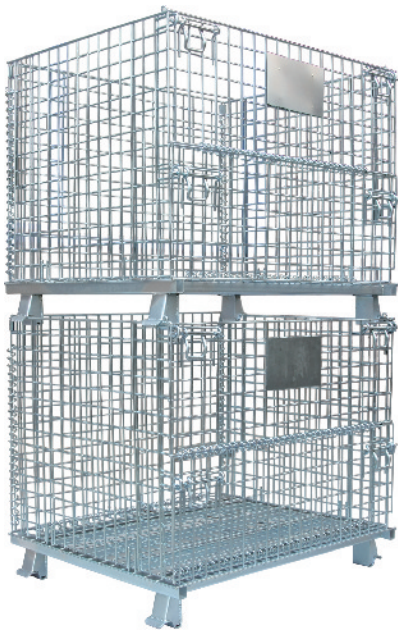
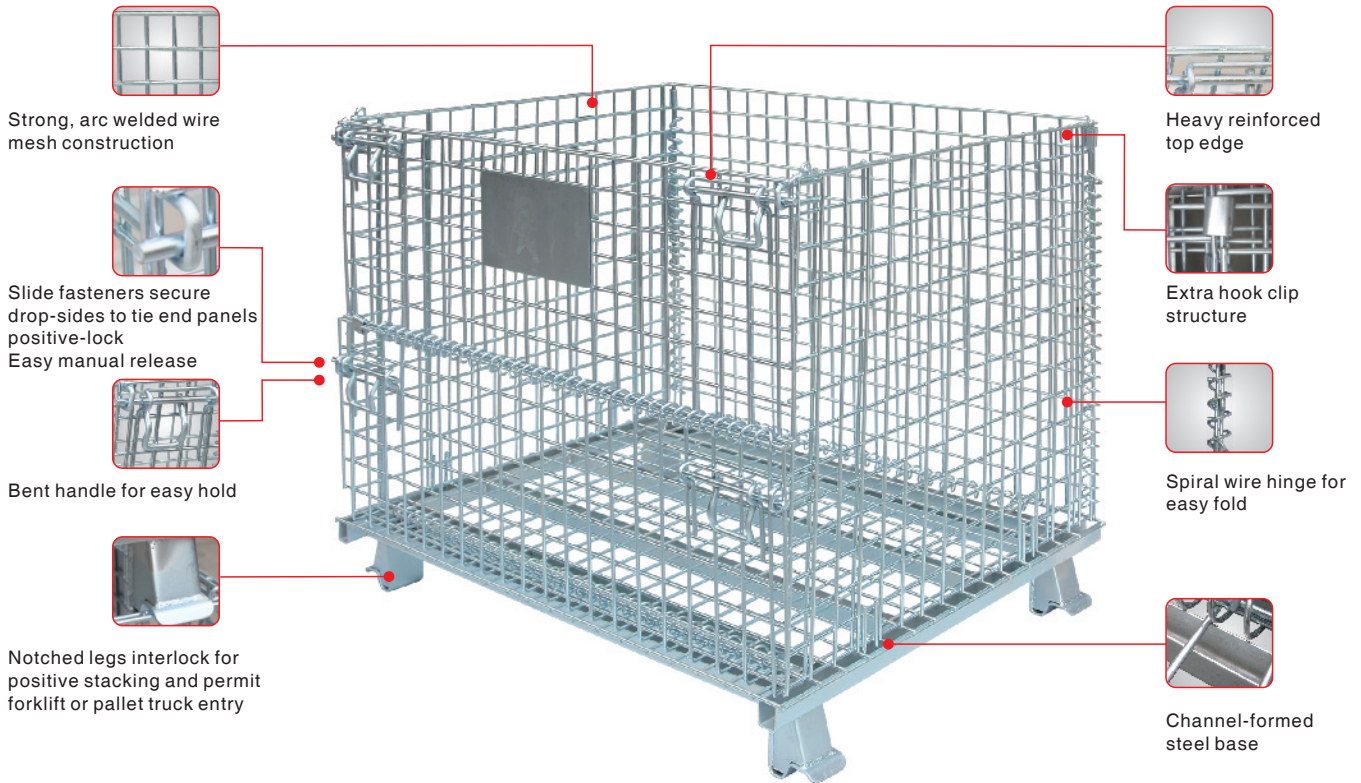
## Cylinder Caddy 6 in 1

Model	Overall Size L" x W" x H"	Wheel	Ramp	Capacity
BN8040401	33 x 34 x 41	-	-	600lbs
BN8040402	33 x 34 x 46	4" polyolefin	yes	600lbs

## Cylinder Caddy 4 in 1

Model	Overall Size L" x W" x H"	Wheel	Ramp	Capacity
BN8040501	23 x 34 x 41	-	-	400lbs
BN8040502	23 x 34 x 46	4" polyolefin	yes	400lbs

# FOLDING WIRE CONTAINER



These folding wire containers are made from strong, arc welded wire mesh construction with heavily reinforced corners and channel -formed base. The open mesh allows excellent visibility of contents and inventory control with minimal dust build up. Sets up and folds in seconds for valuable time and space savings. Drop gate allows access when stacked. Durable zinc plated finish resists rust and corrosion.

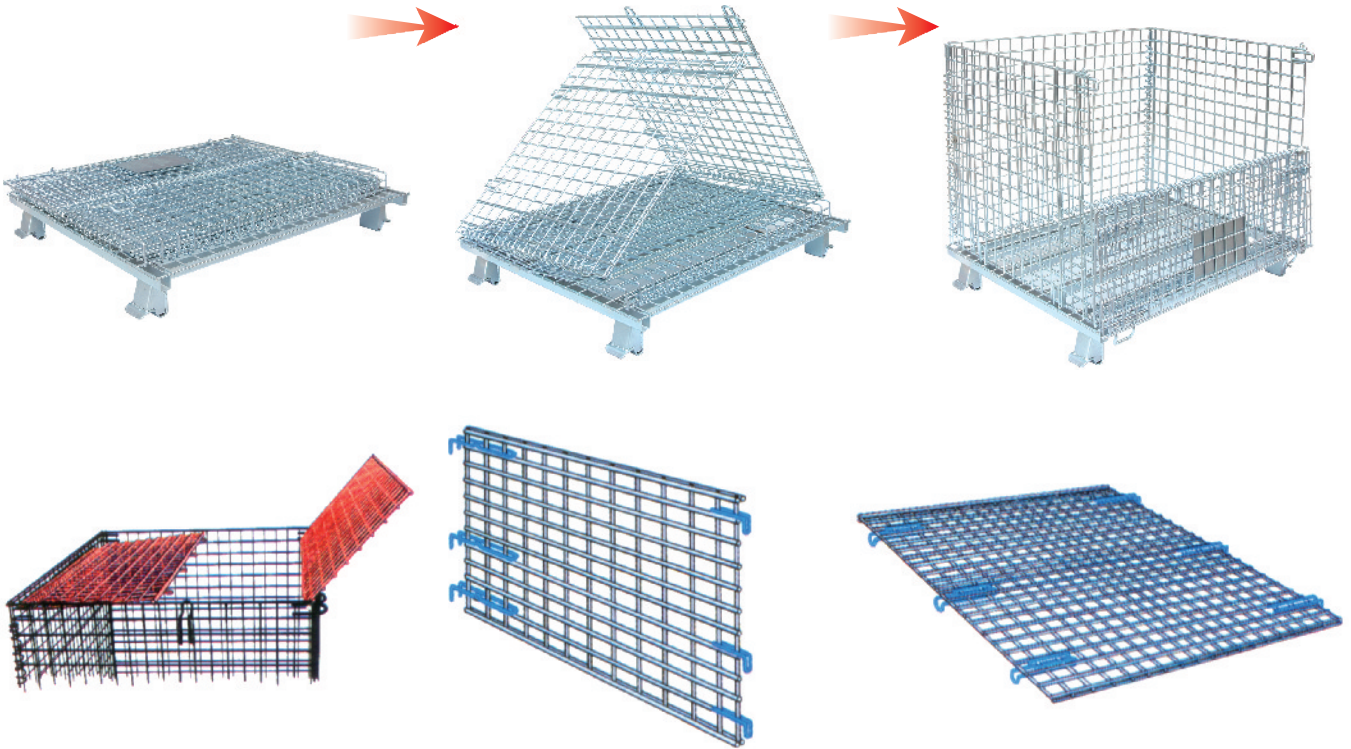
- Options:
- Vertical and horizontal divider for easy storage.
  - Hinged lid and padlock for security.
  - Mobilize the container with castor kit.

Model	Overall L x W x H (" )	Inside Size L x W x H (" )	Load Capacity (lbs)	Wire Diameter	Mesh Size (" )	Wt. (lbs)	Quantity Can Be Stacks
BN6150101	40 x 32 x 33	38 x 30 x 28	3000	3GA	2 x 2	125	4
BN6150102	47 x 40 x 35	45 x 38 x 30	4000	3GA	2 x 2	176	4
BN6150103	40 x 32 x 33	38 x 30 x 28	2000	3GA	4 x 2	110	3
BN6150104	47 x 40 x 35	45 x 38 x 30	2000	3GA	4 x 2	154	3
BN6150105	40 x 32 x 33	38 x 30 x 28	2000	4GA	2 x 2	115	4
BN6150106	47 x 40 x 35	45 x 38 x 30	3000	4GA	2 x 2	163	4
BN6150107	32 x 24 x 25	30 x 22 x 20	1000	3GA	2 x 2	77	4
BN6150108	60 x 44 x 40	58 x 42 x 35	3000	3GA	2 x 2	280	4



# FOLDING WIRE CONTAINER

## Easy Assembly

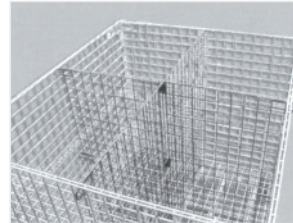


### Hinged Lid

Model	Size L x W (")
BN6150401	32 x 24
BN6150402	40 x 32
BN6150403	47 x 40
BN6150404	60 x 44

### Vertical Divider

Model	Size L x H (")
BN6150201	15 x 20
BN6150202	19 x 28
BN6150203	19 x 30
BN6150204	22.5 x 28
BN6150205	22.5 x 30
BN6150206	29 x 35



### Horizontal Divider

Model	Size W x H (")
BN6150301	22 x 20
BN6150302	30 x 28
BN6150303	30 x 30
BN6150304	38 x 28
BN6150305	38 x 30
BN6150306	42 x 35



Container with Castor



Suffix of P for 5 sides plastic board addition



Steel bottom plate for extra capacity



### Swivel Castor with Brake

Model	Size H (")
BN6150501	5
BN6150502	6



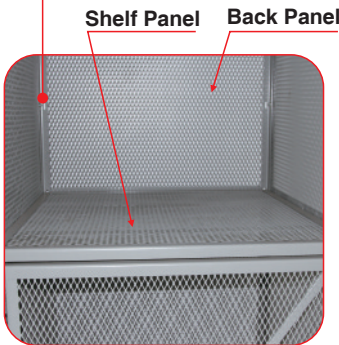
### Fix Castor

Model	Size H (")
BN6150603	5
BN6150604	6

# EMPLOYEE DISPATCHER WIRE LOCKER



Easy Bolt Connect



Shelf Panel Back Panel

**Roof Panel / Shelf Panel**

Model	Size L" x W"
BN8060101	36 x 36
BN8060102	36 x 48
BN8060103	36 x 60
BN8060104	48 x 48
BN8060105	48 x 60

**Side Panel**

Model	Size W" x H"
BN8060201	36 x 90
BN8060202	48 x 90
BN8060203	60 x 90

**Back Panel**

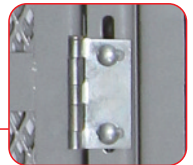
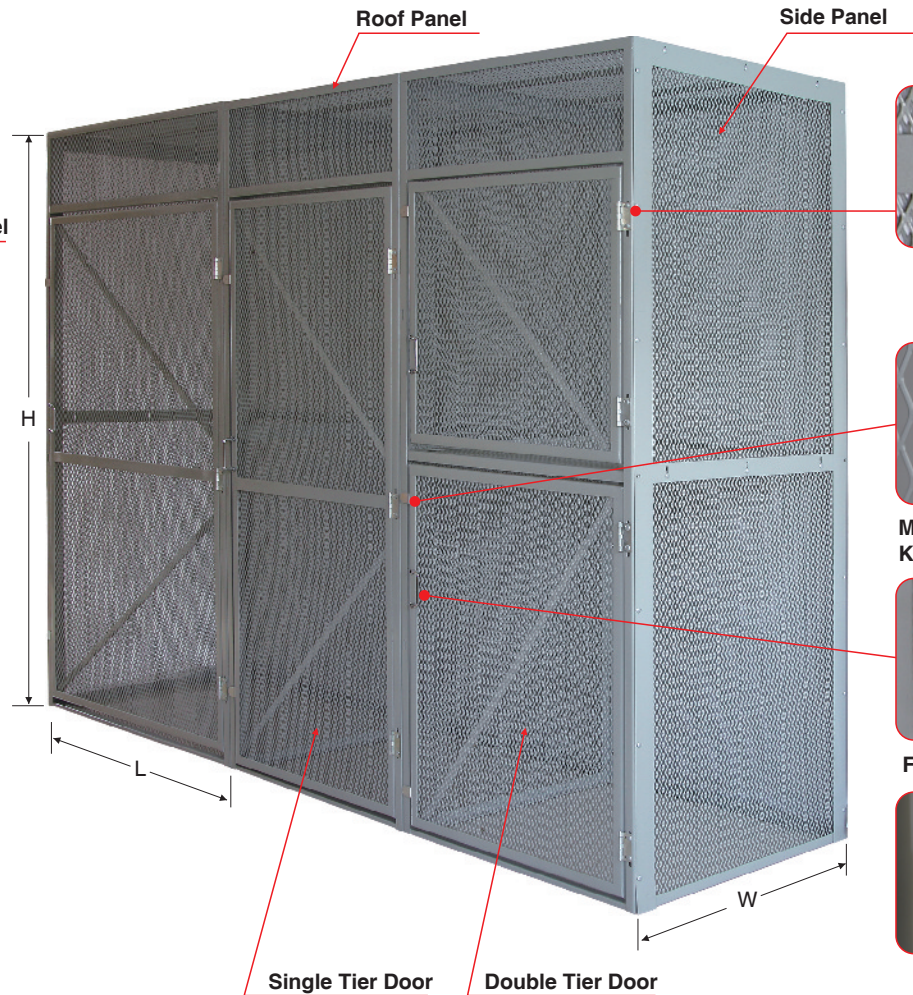
Model	Size L" x H"
BN8060301	36 x 90
BN8060302	48 x 90

**Single Tier Door**

Model	Size L" x H"
BN8060401	36 x 90
BN8060402	48 x 90

**Double Tier Door**

Model	Size L" x H"
BN8060501	36 x 90
BN8060502	48 x 90



Heavy-Duty Butt Hinges



Magnetic Catch Keeps Door Shut



Foldable Handle

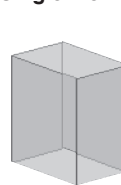


Padlock Hasp

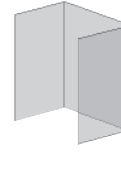
- Lockers feature individually locked compartments making them well-suited for a variety of operations, especially where service employees need to pick up daily work orders and equipment. Available in three standard sizes ranging from 36" x 36" x 90" to 48" x 60" x 90".
- Pre-punched components for easy assembly. Additional units are easily connected via pre-punched holes.
- Doors are equipped with steel pin butt hinges to withstand years of heavy use and padlock hasps for security.
- Standard with a grey powder coating finish
- Optional rear door available for filling stock and inventory control
- A single dispatcher can feed items into individually-accessible compartments
- Angle steel Frame 30 x 30 x 2.75mm
- 11 gauge expanded metal

Modular design makes lockers easy to plan, install and relocate. Available in single and double tier units, and can be combined. Begin with Starter unit, single or double tier; complete row with Add-On units.

**Single Tier**

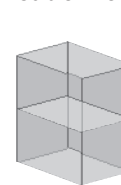


- Starter**  
1 Single tier door  
2 Side panel  
1 Back panel

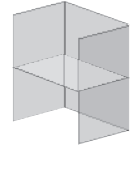


- Add-On**  
1 Single tier door  
1 Side panel  
1 Back panel

**Double Tier**

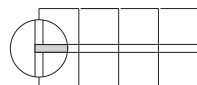
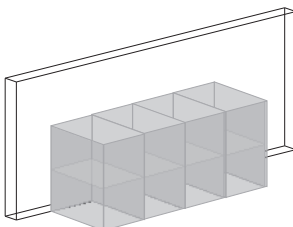


- Starter**  
1 Double tier door  
2 Side panel  
1 Shelf  
1 Back panel



- Add-On**  
1 Double tier door  
1 Side panel  
1 Shelf  
1 Back panel

Single row locker configurations installed against an existing wall do not require optional back panels. Double row locker configurations share common back panels.





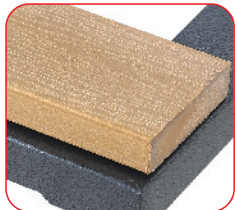
# MINE INDUSTRIAL WIRE LOCKER



Clothes Hanger



Chrome Plated Lock Handle



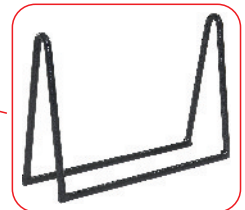
Timber Finished Seat



Hard Hat Shelf



Pin Hinges



Shoe Rack



Adjustable Foot Bolt

- Made of heavy-gauge, full-welded structure wire mesh.
- Knock-down structure and hinges make assembly easy.
- Chrome plated locks and timber finished seat.
- Metal hanger and shoe rack for storing clothes and shoe in order and neatness.
- Powder coated finish and various colors available.
- OEM services provided.
- Wire diameter 3mm and 4mm
- Mesh size 25mm x 25mm and 50mm x 50mm



## Single Door

Model	Size W x D x H(mm)
BN8070101	400 x 450 x 2100
BN8070102	300 x 450 x 2100

## Double Door

Model	Size W x D x H(mm)
BN8070201	800 x 450 x 2100
BN8070202	600 x 450 x 2100

## Triple Door

Model	Size W x D x H(mm)
BN8070301	1200 x 450 x 2100
BN8070302	900 x 450 x 2100

## Single Door/2 Tier locker

Model	Size W x D x H(mm)
BN8070401	400 x 450 x 2100
BN8070402	300 x 450 x 2100

## Double Door/2 Tier Locker

Model	Size W x D x H(mm)
BN8070501	800 x 450 x 2100
BN8070502	600 x 450 x 2100

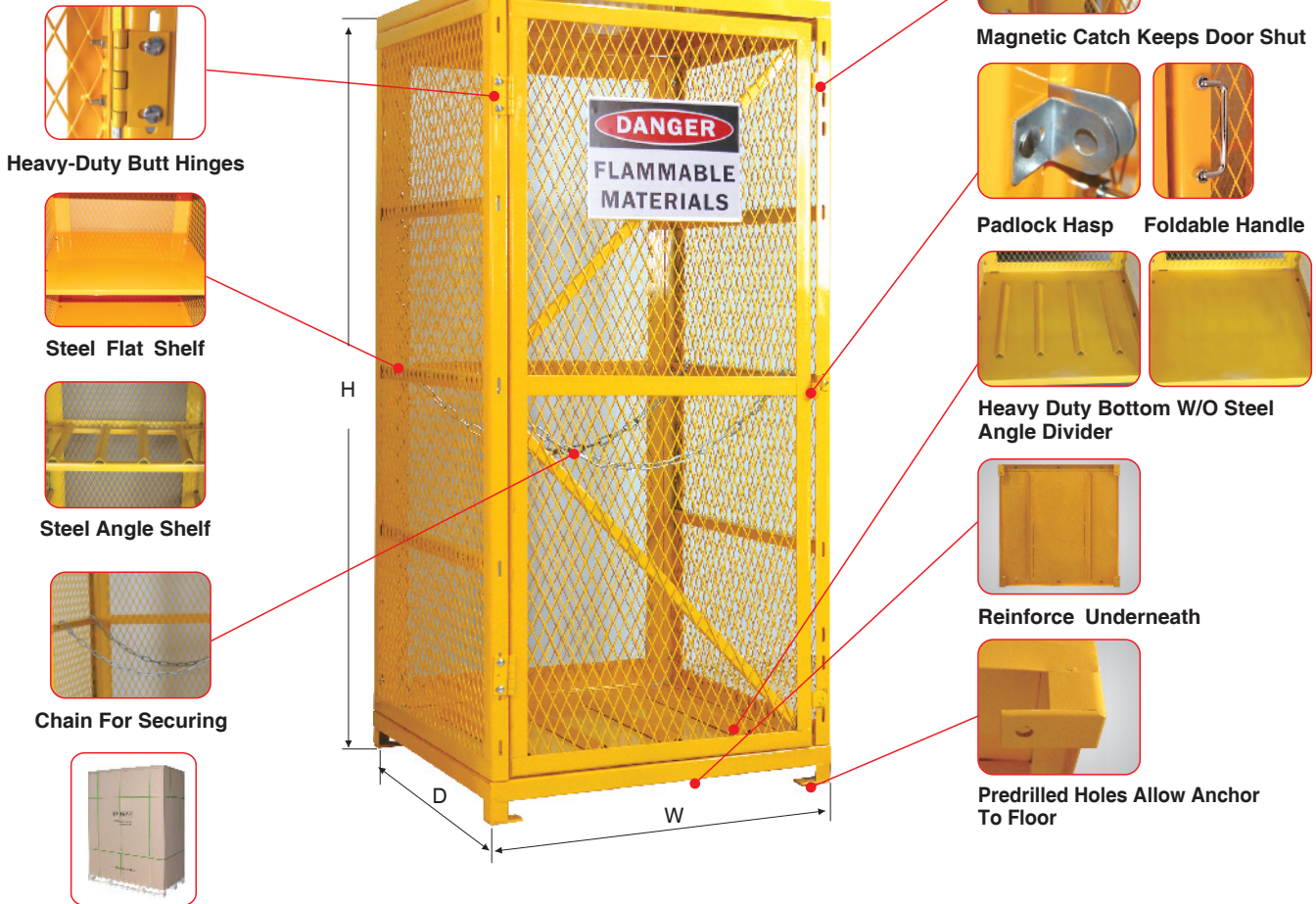
## Triple Door/2 Tier Locker

Model	Size W x D x H(mm)
BN8070601	1200 x 450 x 2100
BN8070602	900 x 450 x 2100

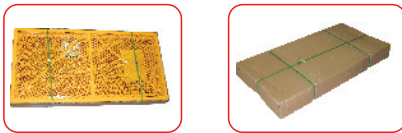
# CYLINDER STORAGE CABINET LOCKER

Meet all relevant NFPA and OSHA standards for storing dangerous and flammable materials. Made of heavy-gauge, expanded metal. Heavy-duty butt hinges and padlock hasp. Magnetic catch keeps door shut when not locked. Vertical storage lockers accept all standard vertical cylinders up to 59¾" or 65". Feature adjustable chains for securing vertical cylinders, adjust in 1" increments. Horizontal cylinder storage lockers accommodate 20 and 33½" lb. LPG cylinders and canisters.

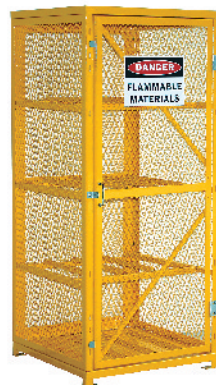
- 1½" x ½" angle steel frame
- 14-ga. steel top
- 14-ga. Expanded metal
- Predrilled holes allow anchor to floor



Assembled Pack Available



Flat Pack



Cylinder Storage Cabinet 4 Horizontal

Cylinder Storage Cabinet 8 Horizontal

Cylinder Storage Cabinet 16 Horizontal

Model	Overall Size (W" x D" x H")
BN8010101	31 x 30 x 35

Model	Overall Size (W" x D" x H")
BN8010201	31 x 30 x 65
BN8010202	31 x 30 x 72

Model	Overall Size (W" x D" x H")
BN8010301	60 x 30 x 65
BN8010302	60 x 30 x 72



# CYLINDER STORAGE CABINET LOCKER



**Cylinder Storage Cabinet 18 Vertical**

Model	Overall Size (W" x D" x H")
BN8010401	60 x 30 x 65
BN8010402	60 x 30 x 72



**Cylinder Storage Cabinet 8 Horizontal and 9 Vertical**

Model	Overall Size (W" x D" x H")
BN8010501	60 x 30 x 65
BN8010502	60 x 30 x 72



**Cylinder Storage Cabinet 9 Vertical**

Model	Overall Size (W" x D" x H")
BN8010601	31 x 30 x 65
BN8010602	31 x 30 x 72



**Cylinder Storage Cabinet 12 Horizontal**

Model	Overall Size (W" x D" x H")
BN8010701	46 x 30 x 72



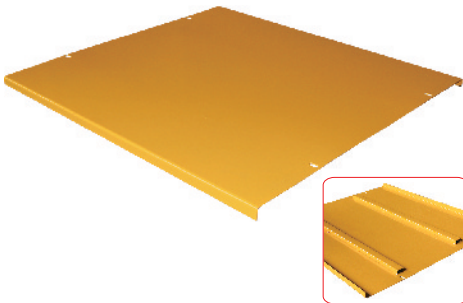
**Cylinder Storage Cabinet 4 Vertical**

Model	Overall Size (W" x D" x H")
BN8010801	31 x 30 x 35
BN8010802	31 x 30 x 41



**Aerosol Can Storage Cage**

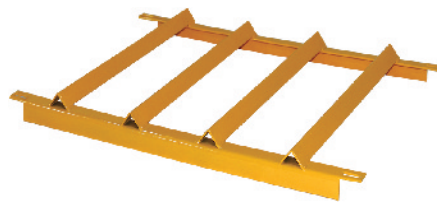
Model	Overall Size (W" x D" x H")
BN8010901	20 x 12 x 12
BN8010902	20 x 12 x 20



Reinforce Underneath

**Steel Flat Shelf**

Model	Size (W" x D")
BN8010201	29 x 28
BN8010202	30 x 28



**Steel Angle Shelf**

Model	Size (W" x D")
BN8010301	29 x 20
BN8010302	30 x 20



**Security Chain**

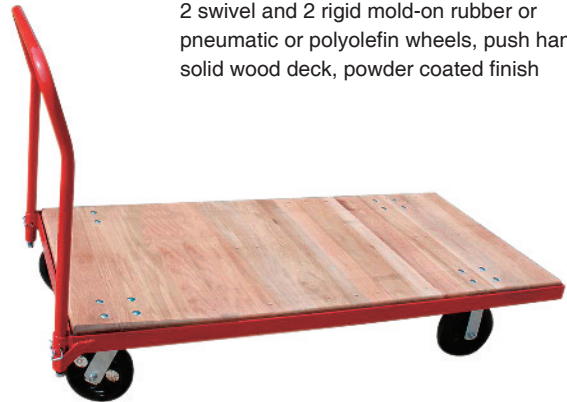
Model	Size (W")
BN8010401	34
BN8010402	31

# PLATFORM TRUCK



**Wood Platform Truck**

2 swivel and 2 rigid mold-on rubber or pneumatic or polyolefin wheels, push handle, solid wood deck, powder coated finish



**Wood Platform Truck**

2 swivel and 2 rigid mold-on rubber or pneumatic or polyolefin wheels, push handle, solid wood deck, powder coated finish

**Wood Platform Truck**

Model	L" x W"	Wheel	Capacity (lbs)
BN8110101	48 x 24	Polyolefin 5" x 2"	2600
BN8110102	48 x 24	Mold-on Rubber 8" x 2"	2000
BN8110103	48 x 24	Pneumatic 10" x 3½"	1200
BN8110104	54 x 27	Polyolefin 5" x 2"	2600
BN8110105	60 x 30	Polyolefin 5" x 2"	2800
BN8110106	60 x 30	Mold-on Rubber 8" x 2"	2000
BN8110107	60 x 30	Pneumatic 10" x 3½"	1200

**Wood Platform Truck**

Model	L" x W"	Wheel	Capacity (lbs)
BN8110201	48 x 24	Polyolefin 5" x 2"	2600
BN8110202	48 x 24	Mold-on Rubber 8" x 2"	2000
BN8110203	48 x 24	Pneumatic 10" x 3½"	1200
BN8110204	54 x 27	Polyolefin 5" x 2"	2600
BN8110205	54 x 27	Mold-on Rubber 8" x 2"	2000
BN8110206	54 x 27	Pneumatic	1200
BN8110207	60 x 30	Polyolefin 5" x 2"	2800
BN8110208	60 x 30	Mold-on Rubber 8" x 2"	2000
BN8110209	60 x 30	Pneumatic 10" x 3½"	1200

**Platform Truck Fixed / Adjustable Height**

Fix or adjust in 2" increments with 2 rigid and 2 swivel mold-on wheels, 8" dia and 2" width, removable handle, solid wood deck, powder coated finish



**Mesh Platform Truck**

With 2 rigid and 2 swivel urethane wheels 5" dia and 1¼" width, twin tubular handle, wood deck, powder coated finish



**Platform Truck Fixed / Adjustable Height**

Model	L" x W"	Height (")	WHEEL	Capacity (lbs)
BN8110301	48 x 24	41.5	Mold-On Rubber 8" x 2"	1200
BN8110302	48 x 24	41 to 50	Mold-On Rubber 8" x 2"	1200
BN8110303	60 x 30	41.5	Mold-On Rubber 8" x 2"	1200
BN8110304	60 x 30	41 to 50	Mold-On Rubber 8" x 2"	1200

**Mesh Platform Truck**

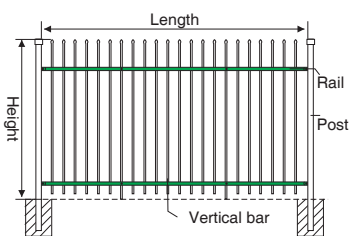
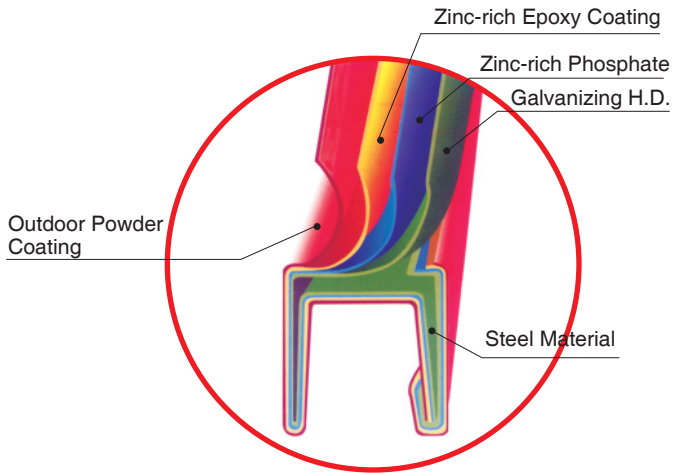
Model	L" x W" x H"	WHEEL	Capacity (lbs)
BN8110401	48 x 24 x 35	Polyurethane 5" x 1¼"	1200
BN8110402	60 x 30 x 35	Polyurethane 5" x 1¼"	1200



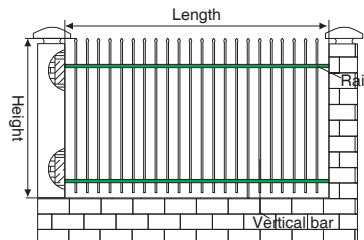
# WELDED METAL FENCES



High quality zinc dipped steel tube and high surface treatment and coating technology to assure superior anti-corrosion performance of our fencing products. Our coatings are able to withstand even the most severe weather environments. Easy to assemble and any color available.



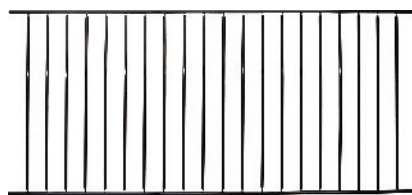
with Post



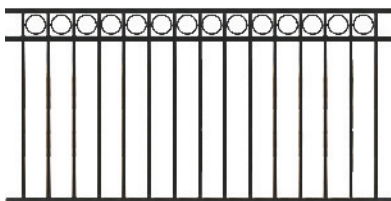
without Post



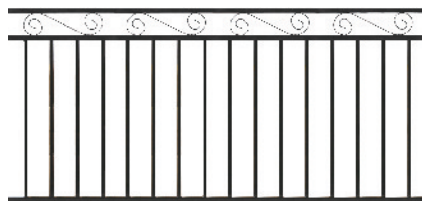
Specify type suffix: A



Specify type suffix: B



Specify type suffix: C



Specify type suffix: D



### Connector

Model	Size (mm)
BN8100301	20

### Self-tapping Screw

Model	Size
BN8100401	M6 x 30



Post

### Welded Metal Fences

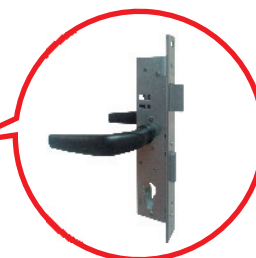
Model	Overall Size L x H (mm)
BN8100101	2400 x 1800
BN8100102	1800 x 1800
BN8100103	1500 x 1800
BN8100104	2400 x 1500
BN8100105	1800 x 1500

### Single Door

Model	Overall Size L x H (mm)
BN8100201	2400 x 1800
BN8100202	1800 x 1800
BN8100203	1800 x 1500



Single Door



Lock

### Post

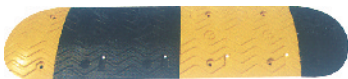
Model	Size H (mm)
BN8100501	2100
BN8100502	1800
BN8100503	1500



BN730001



BN730002



BN730003



BN730004



BN730005



BN730006



BN730007

**Rubber Speed Bump**

Model	Size L x W x H (mm)	Weight (Kg)	End L x W x H (mm)
BN730001	1000 x 300 x 50	14	-
BN730002	500 x 350 x 50	10.8	175 x 350 x 50
BN730003	1000 x 380 x 50	20.1	190 x 380 x 50

**Rubber Parking Curb**

Model	Base Size (mm)	Height (mm)	Weight (kg)
BN730004	500 x 160	100	5
BN730005	600 x 130	110	5
BN730006	600 x 160	100	5.25

**Corner Guard**

Model	L x W x T (mm)
BN730007	800 x 100 x 8
BN730008	800 x 100 x 10
BN730009	800 x 100 x 12
BN730010	800 x 100 x 20



BN730011 BN730012



BN730013 BN730014 BN730015

**Rubber Traffic Cone**

Model	Base Size (mm)	Height (mm)	Weight (kg)
BN730011	360 x 360	500	1.8
BN730012	360 x 360	700	3.0

**PVC Traffic Cone**

Model	Base Size (mm)	Height (mm)	Weight (kg)
BN730013	275 x 275	450	1.4
BN730014	275 x 275	450	1.4
BN730015	360 x 360	900	5.5



BN730020 BN730021 BN730022



BN730017 BN730019

**Plastic Traffic Cone**

Model	Base Size (mm)	Height (mm)	Weight (kg)
BN730016	300 x 300	500	2.0
BN730017	490 x 490	1000	5.0
BN730018	350 x 350	750	2.8
BN730019	φ 420	700	1.5

**Delineator Post**

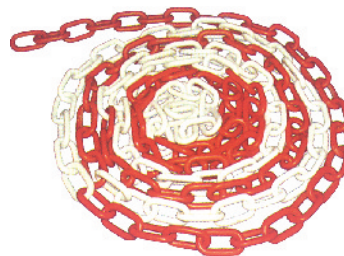
Model	Height (mm)	Weight (kg)
BN730020	450 x φ 80	0.6
BN730021	600 x φ 80	1.0
BN730022	800 x φ 80	0.9

**Plastic Traffic Cone**



**Wide Angle Convex Safety Mirror**

Model	Specification (mm)
BN730023	φ 450
BN730024	φ 600
BN730025	φ 800
BN730026	φ 1000

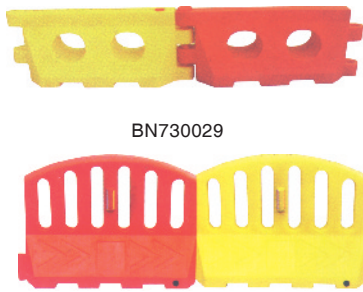


BN730027  
Plastic Chain



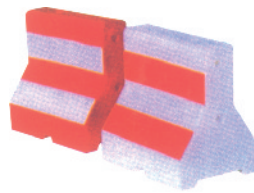
BN730028  
Warning Triangle





BN730029

BN730030



BN730031



BN730032

### Interlocking Safety Barricade

Model	Length (mm)	Top Width (mm)	Bottom Width (mm)	Height (mm)	Net Weight (kg)	Water Capacity (kg)
BN730029	1650	150	450	650	12.5	300
BN730030	1500	150	430	1200	19	200
BN730031	600	150	430	600	4	60

### Anti-crash Bucket

Model	Height (mm)	Diameter (mm)	Net Weight (kg)	Water Capacity (kg)
BN730032	824	582	5	400

### Reflective Safety Vest



BN730033



BN730034



BN730035



BN730036

### Reflective Fabric Tapes

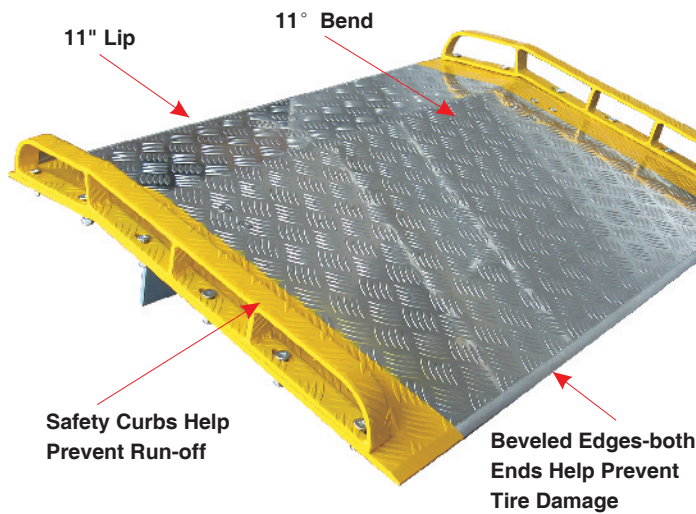
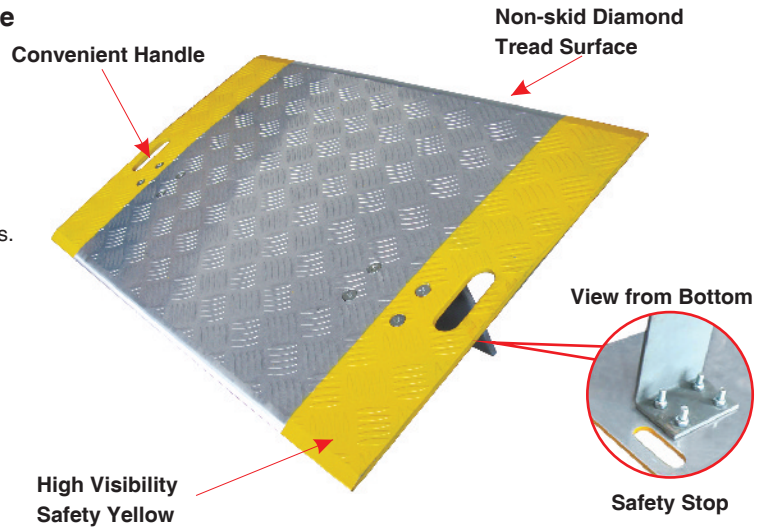


Model	Product Name	Color	Specification	Backing	Coefficient of Retroreflection R <sup>1</sup>
BN730037	High Reflective Fabric (T/C)	Grey	Width 100-132cm, can be slitted into stripes	65% Polyester, 35% cotton	>380(cd/lx.m <sup>2</sup> )
BN730038	High Reflective Fabric (pol)	Grey	Width 100-132cm, can be slitted into stripes	100% Polyester	>380(cd/lx.m <sup>2</sup> )
BN730039	High Reflective Heat-transfer Film	-	Width 100-132cm, can be slitted into stripes	Heat Activated Adhesive Film	>380(cd/lx.m <sup>2</sup> )
BN730040	Ordinary Reflective Fabric (T/C)	Grey	Width 100-132cm, can be slitted into stripes	65% Polyester, 35% cotton	>20(cd/lx.m <sup>2</sup> )
BN730041	Ordinary Reflective Fabric (pol)	Grey	Width 100-132cm, can be slitted into stripes	100% Polyester	>20(cd/lx.m <sup>2</sup> )
BN730042	High Reflective Fabric (T/C)	Silver	Width 100cm	65% Polyester, 35% cotton	>380(cd/lx.m <sup>2</sup> )
BN730043	Ordinary Reflective Fabric (pol)	Different colors	Width 100-132cm, can be slitted into stripes	100% Polyester	>20(cd/lx.m <sup>2</sup> )
BN730044	Silver Flame Retardant Reflective Fabric	Silver	Width 100cm, can be slitted into stripes, hand cut or guillotined	Nomex Fibre	>380(cd/lx.m <sup>2</sup> )

## Diamond Thread Surface Aluminium Dock Plate

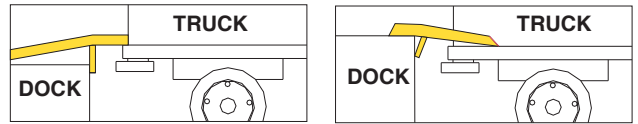
3/8" thickness T6061 aluminium material can be lifted easily using 2 sides holes but withstands heavy traffic. The traction points provides more tension per square foot than normal flat surface. The 11" lips with beveled edges and an 11° crown provide smooth, efficient in and out. A bolted safety stop underneath to keep the dock plate in position. Note that width should be 12" wider than load. Not for use with rider type trucks.

Model	W"	L"	Wt. lbs	Net Wt.
BN813624	36	24	3350	35
BN813636	36	36	2000	46
BN814824	48	24	3700	51
BN814836	48	36	2700	66
BN814848	48	48	2050	86
BN816048	60	48	2660	100



## Dock Board with Curbs

Operation with efficiency and safety with less labor costs. Anti-skid diamond tread surface helps prevent accidents. High-visibility tapered color curbs help prevent tire damage. Curb provides full length handgrip for ease and safety in handling by forklift. Beveled board ends supply smooth in and out. Safety stop underneath fits snugly between truck and dock so the board will not move under load. An 11° angle supplied unless another angles of operation is specified. 11" entry lip with beveled nose protects tires.



## Aluminium with Aluminium Curbs

Model	W" x L"	Wt. lbs	Model	W" x L"	Wt. lbs
<b>5,000 LB. CAPACITY</b>			<b>10,000 LB. CAPACITY</b>		
BN825436	54 x 36	65	BN836036	60 x 36	130
BN825442	54 x 42	91	BN836042	60 x 42	147
BN825448	54 x 48	103	BN836048	60 x 48	180
BN826036	60 x 36	74	BN837236	72 x 36	156
BN826042	60 x 42	98	BN837242	72 x 42	176
BN826048	60 x 48	114	BN837248	72 x 48	210
<b>7,000 LB. CAPACITY</b>			<b>14,000 LB. CAPACITY</b>		
BN875436	54 x 36	80	BN885436	54 x 36	162
BN875442	54 x 42	101	BN885442	54 x 42	186
BN875448	54 x 48	110	BN885448	54 x 48	202
BN876036	60 x 36	95	BN886036	60 x 36	187
BN876042	60 x 42	119	BN886042	60 x 42	191
BN876048	60 x 48	137	BN886048	60 x 48	237

## Aluminium with Steel Curbs

Model	W" x L"	Wt. lbs	Model	W" x L"	Wt. lbs
<b>10,000 LB. CAPACITY</b>			<b>15,000 LB. CAPACITY</b>		
BN846036	60 x 36	127	BN856036	60 x 36	154
BN846048	60 x 48	165	BN856048	60 x 48	201
BN847236	72 x 36	144	BN857236	72 x 36	177
BN847248	72 x 48	187	BN857248	72 x 48	230

## Steel with Steel Curbs

Model	W" x L"	Wt. lbs
<b>10,000 LB. CAPACITY</b>		
BN866036	60 x 36	251
BN866048	60 x 48	333
BN867236	72 x 36	292
BN867248	72 x 48	388

## Consider From Three Types:

<b>Steel with Steel Curbs</b>	Heavy duty all welded steel. Ideal for frequent motorized traffic. Maximum impact resistance, strength and safety. 10,000 lb. models have built-in lifting loops standard for easy mobility with a fork truck. Chip resistant <b>Gray</b> and <b>Blue</b> painted finish.
<b>Aluminium with Aluminium Curbs</b>	Lightweight boards offer excellent portability and resist corrosion. High strength aluminium board has full-length welded aluminium curbs for extra rigidity and help to prevent operator run-off. Curbs are painted in high-visibility safety <b>Yellow</b> .
<b>Aluminium with Steel Curbs</b>	Combines the strength of steel with lightweight aluminium. Steel bolt-on curbs offer excellent impact resistance to help prevent run-off. Resilient aluminium alloy dock board has positive traction surface. Chip resistant <b>Gray</b> and <b>Blue</b> painted finish.

